



US008295033B2

(12) **United States Patent**
Van Straten

(10) **Patent No.:** **US 8,295,033 B2**
(45) **Date of Patent:** **Oct. 23, 2012**

(54) **MOBILE ELECTRICITY GENERATOR
USING SOLAR, WIND, AND
FUEL-GENERATED POWER**

(76) Inventor: **George Van Straten**, Baraga, MI (US)

(*) Notice: Subject to any disclaimer, the term of this patent is extended or adjusted under 35 U.S.C. 154(b) by 76 days.

(21) Appl. No.: **13/011,291**

(22) Filed: **Jan. 21, 2011**

(65) **Prior Publication Data**

US 2011/0176256 A1 Jul. 21, 2011

Related U.S. Application Data

(60) Provisional application No. 61/297,078, filed on Jan. 21, 2010, provisional application No. 61/359,899, filed on Jun. 30, 2010.

(51) **Int. Cl.**

H02B 1/00 (2006.01)

B62D 63/06 (2006.01)

F03D 9/00 (2006.01)

H02J 7/35 (2006.01)

H02J 1/14 (2006.01)

(52) **U.S. Cl.** **361/601**; 280/400; 290/55; 320/101; 307/22

(58) **Field of Classification Search** 361/601
See application file for complete search history.

(56) **References Cited**

U.S. PATENT DOCUMENTS

6,396,239 B1 * 5/2002 Benn et al. 320/101
7,230,819 B2 6/2007 Muchow et al.
7,749,380 B2 * 7/2010 Yungner et al. 210/143

8,043,499 B2 * 10/2011 Saeed et al. 210/171
2005/0218651 A1 * 10/2005 Lamm 285/321
2006/0137488 A1 * 6/2006 Sakaue et al. 75/255
2008/0068782 A1 * 3/2008 Muchow et al. 361/601
2009/0079161 A1 * 3/2009 Muchow et al. 280/400
2010/0078942 A1 * 4/2010 Bois 290/54
2010/0117368 A1 * 5/2010 Benito et al. 290/55
2010/0140950 A1 6/2010 Pitre

OTHER PUBLICATIONS

Hubner EnergyContainer Mobile Energy for the World, 8 pages, Copyright Sep. 2010, http://www.huebner-giessen.com/fileadmin/dokumente/Energie_Systeme/EnergyContainer/2011-03-14_EnergyContainer_en.pdf.

REMUS (Renewable Energy Mobile Utility System), 4 pages, no date provided, http://www.titansentry.com/PDF/2008%2011%2012_REMUS%20brochure.pdf.

(Continued)

Primary Examiner — Gregory Thompson

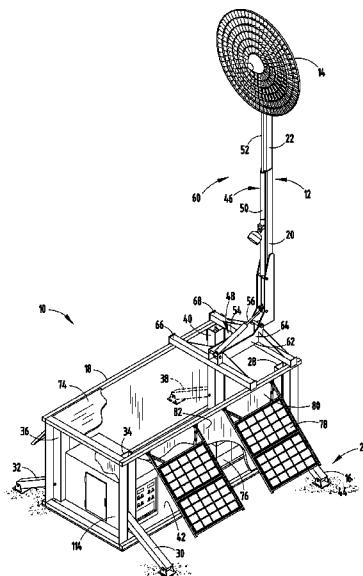
(74) *Attorney, Agent, or Firm* — Price Heneveld LLP

(57)

ABSTRACT

A mobile electricity generator comprising a telescopic boom, a first retractable support leg, and a base. The telescopic boom comprises a first end and a second end. A wind turbine is attached to the second end of the telescopic boom and the wind turbine is capable of transforming wind into electricity. The first end of the telescopic boom and the first retractable support leg is attached to the base. The mobile electricity generator can further comprise a first solar panel that is capable of transforming light into electricity, the base can further comprise an external surface, and the first solar panel can be attached to the external surface of the base. The mobile electricity generator can further comprise a battery in electric communication with the wind turbine and first solar panel and the battery can be capable of at least temporarily storing the electricity.

16 Claims, 13 Drawing Sheets

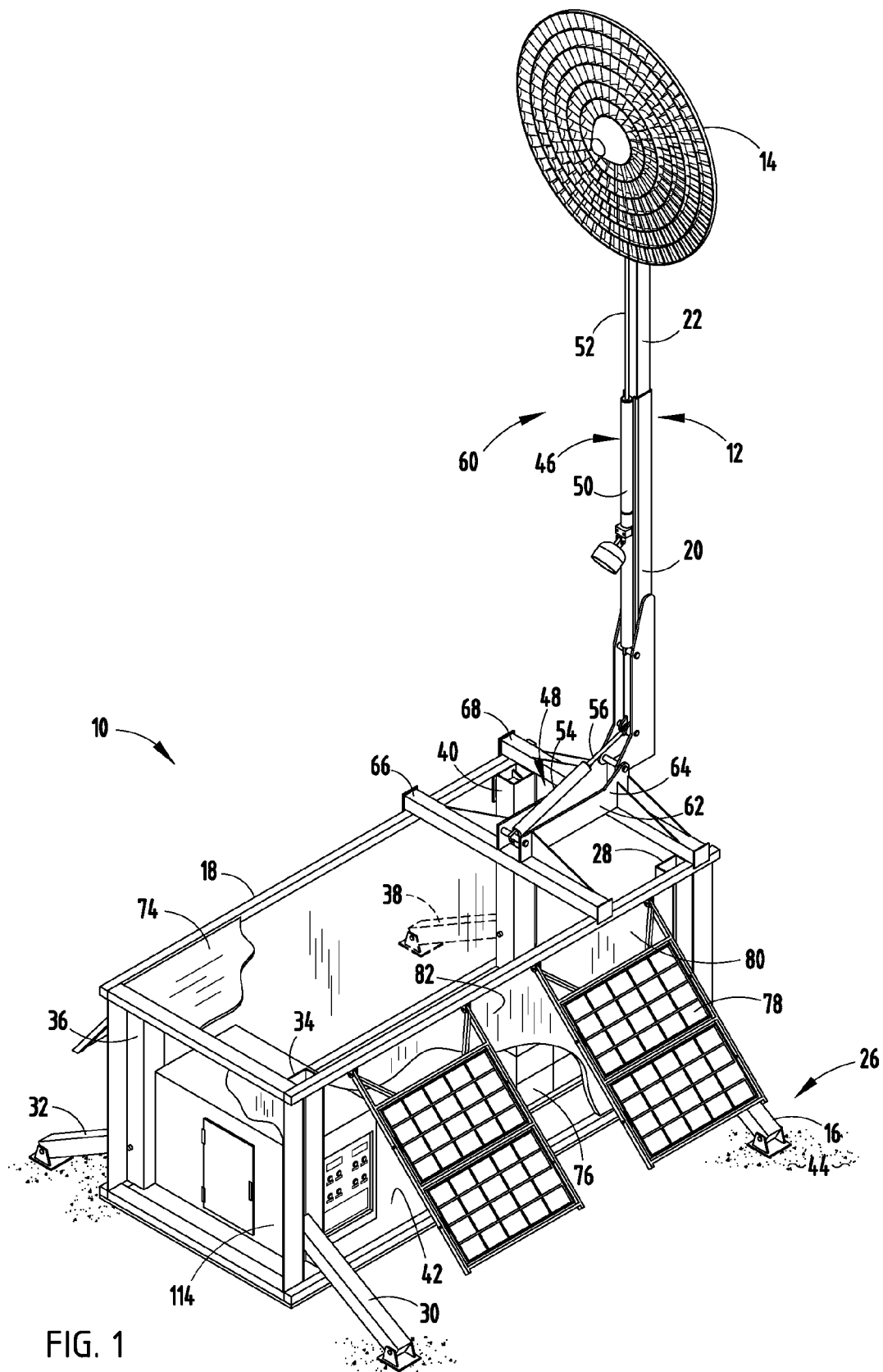


OTHER PUBLICATIONS

Natural Power Concepts: Hawaii-based Natural Power Concepts, Inc. Selected by Oshkosh Corporation to Collaborate on "Renewable Energy Mission Module," 2 pages, no date provided, <http://www.naturalpowerconcepts.com/slide01.html>; http://www.naturalpowerconcepts.com/news_osk.html.

Alpha Energy Features Pre-Configured Solar and Wind Hybrid Power Supplies and Configurator Press Release, Alpha Technologies, 1 page, Oct. 27, 2009, <http://www.alpha.com/Media/Documents/HPSCConfigurator.pdf>.

* cited by examiner



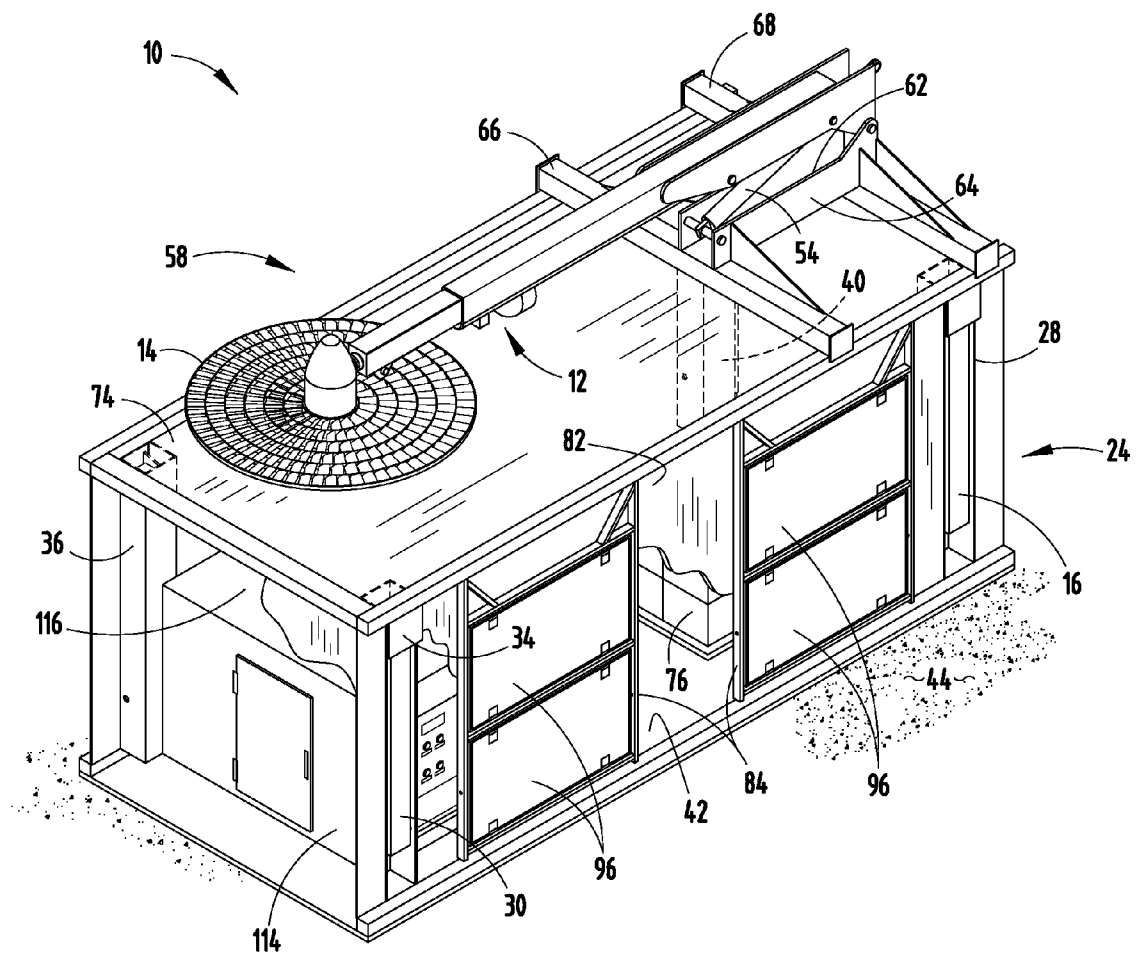
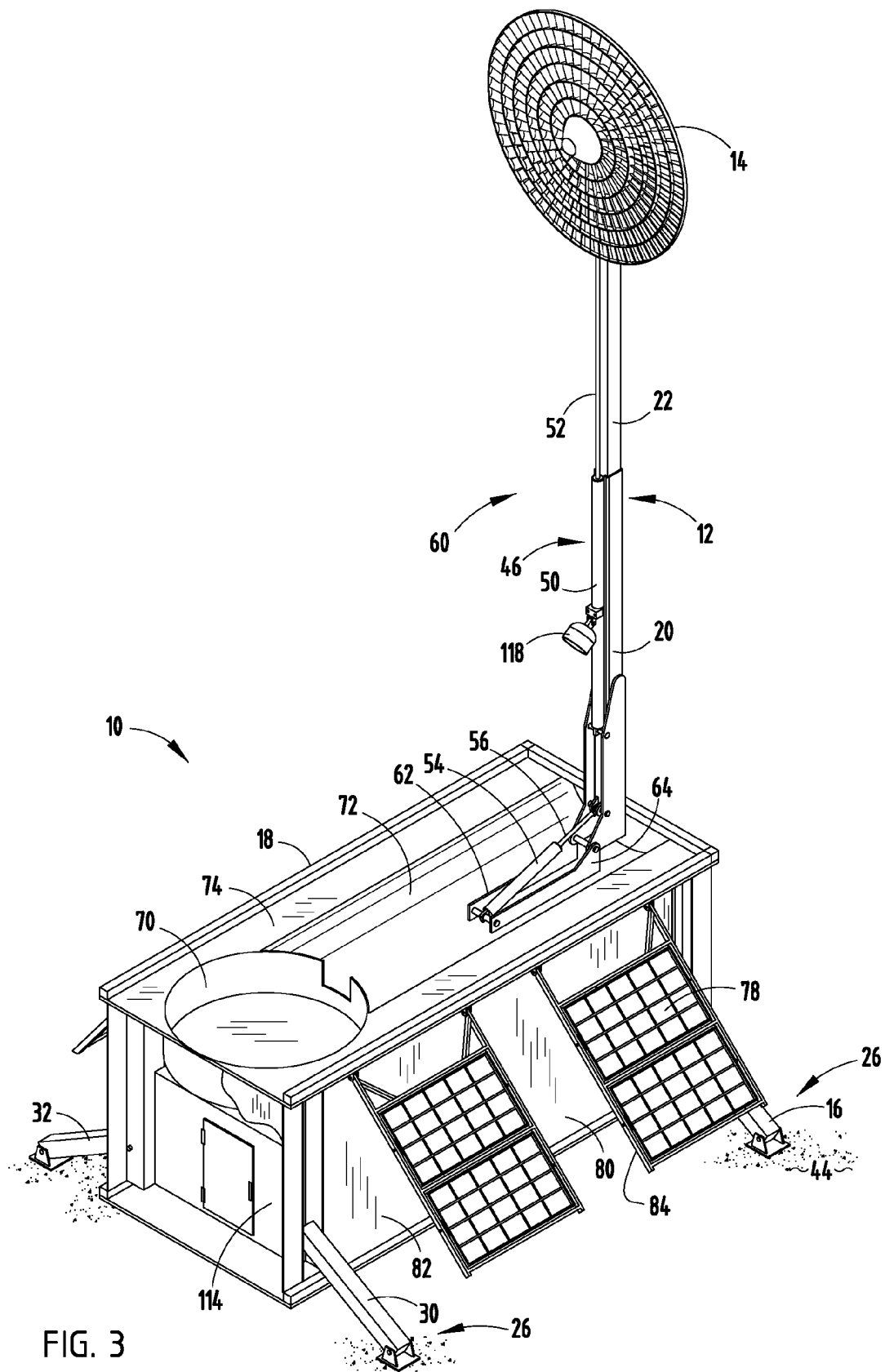


FIG. 2



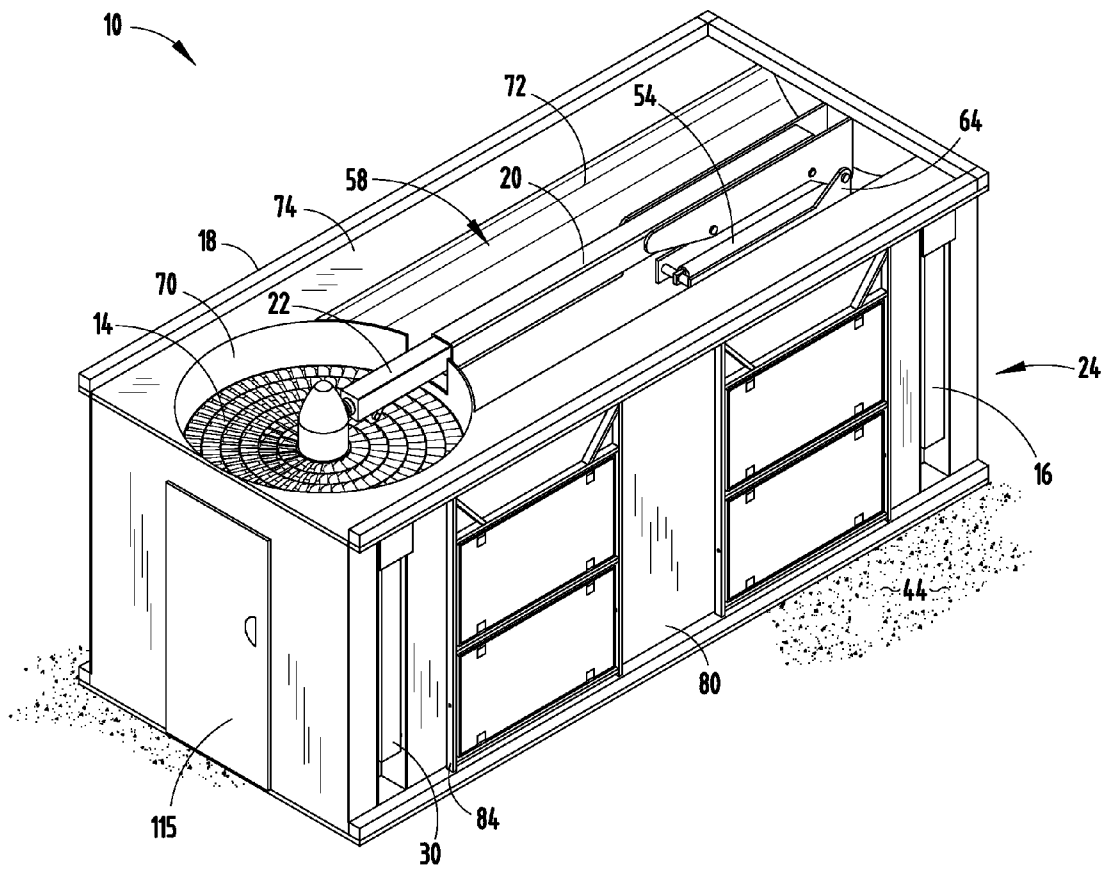


FIG. 4

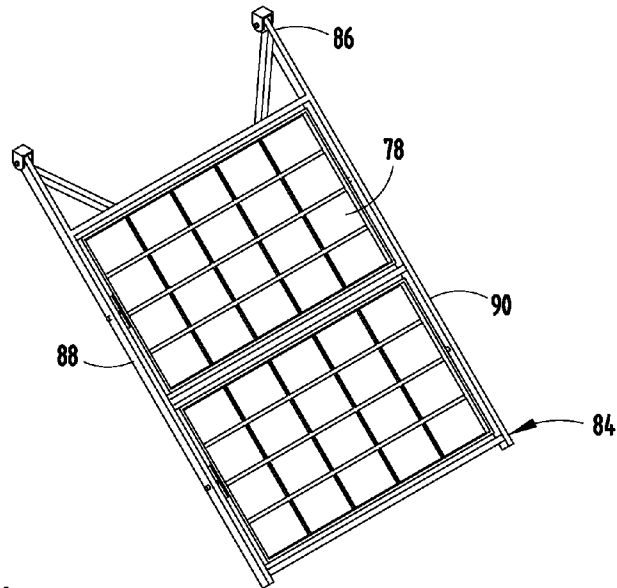


FIG. 5A

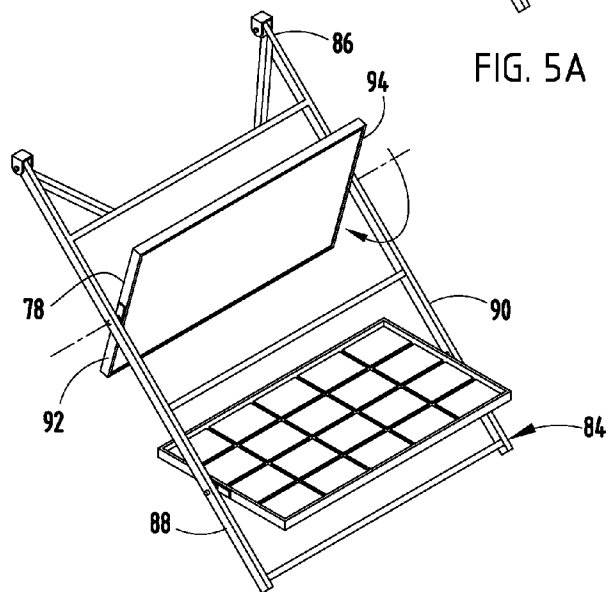


FIG. 5B

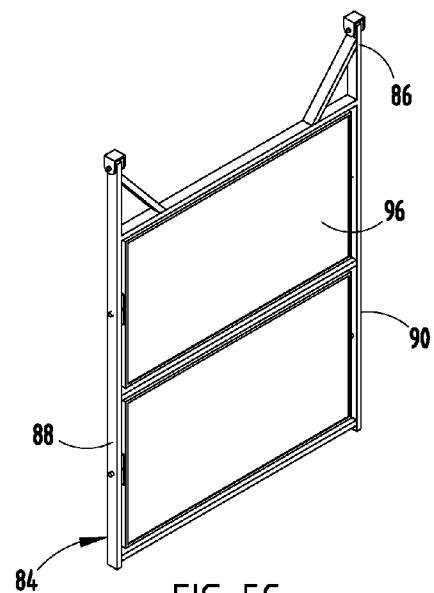


FIG. 5C

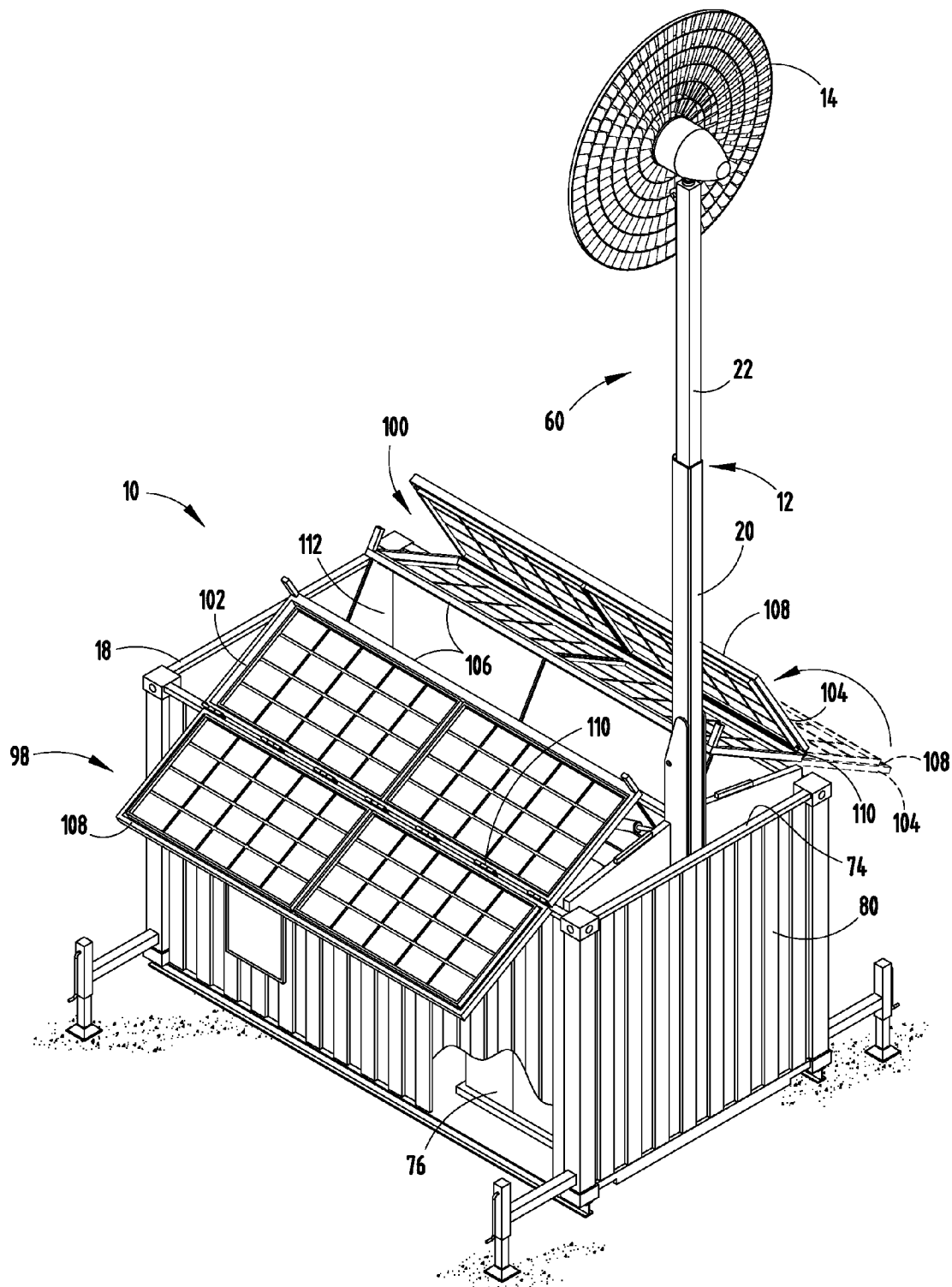
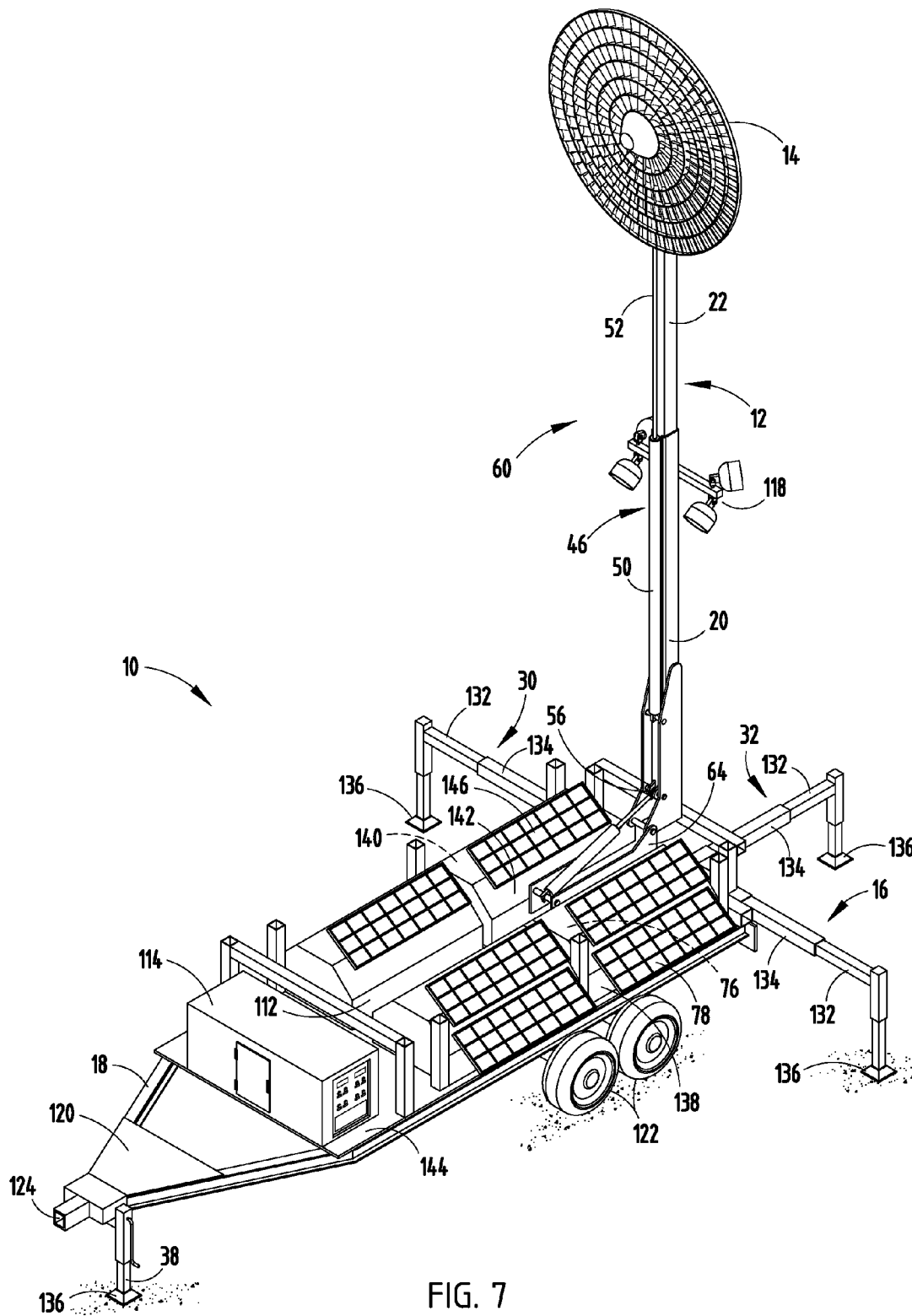


FIG. 6



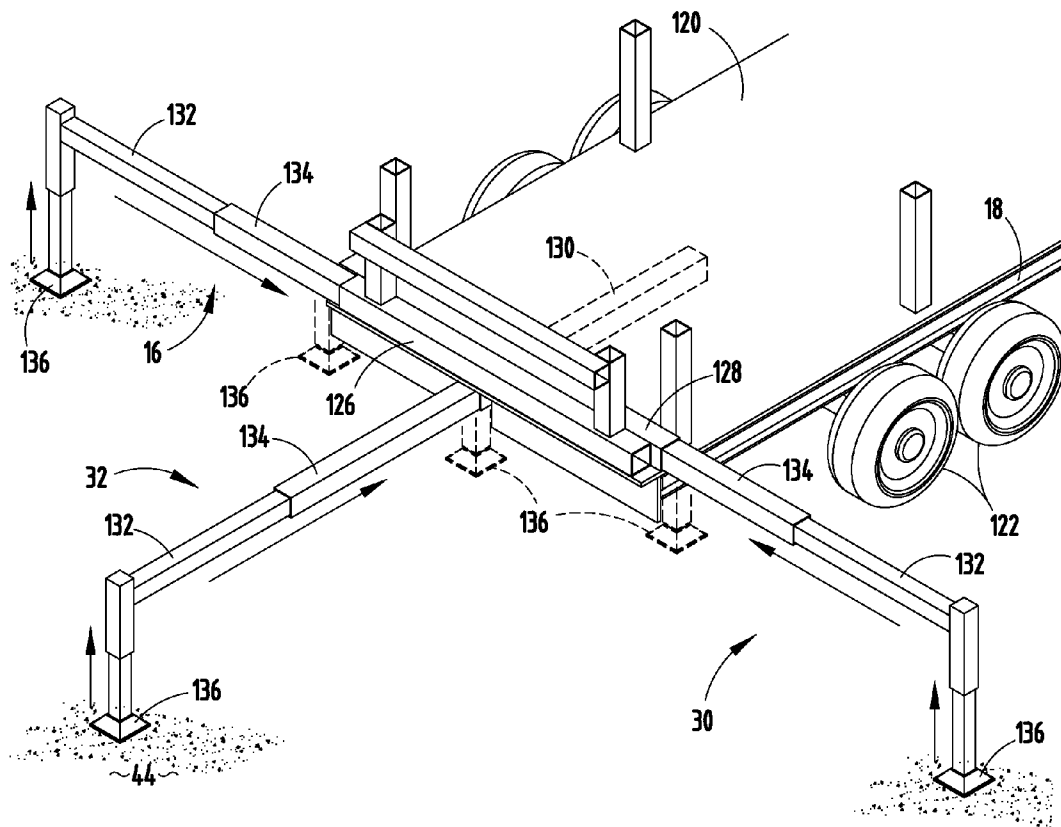
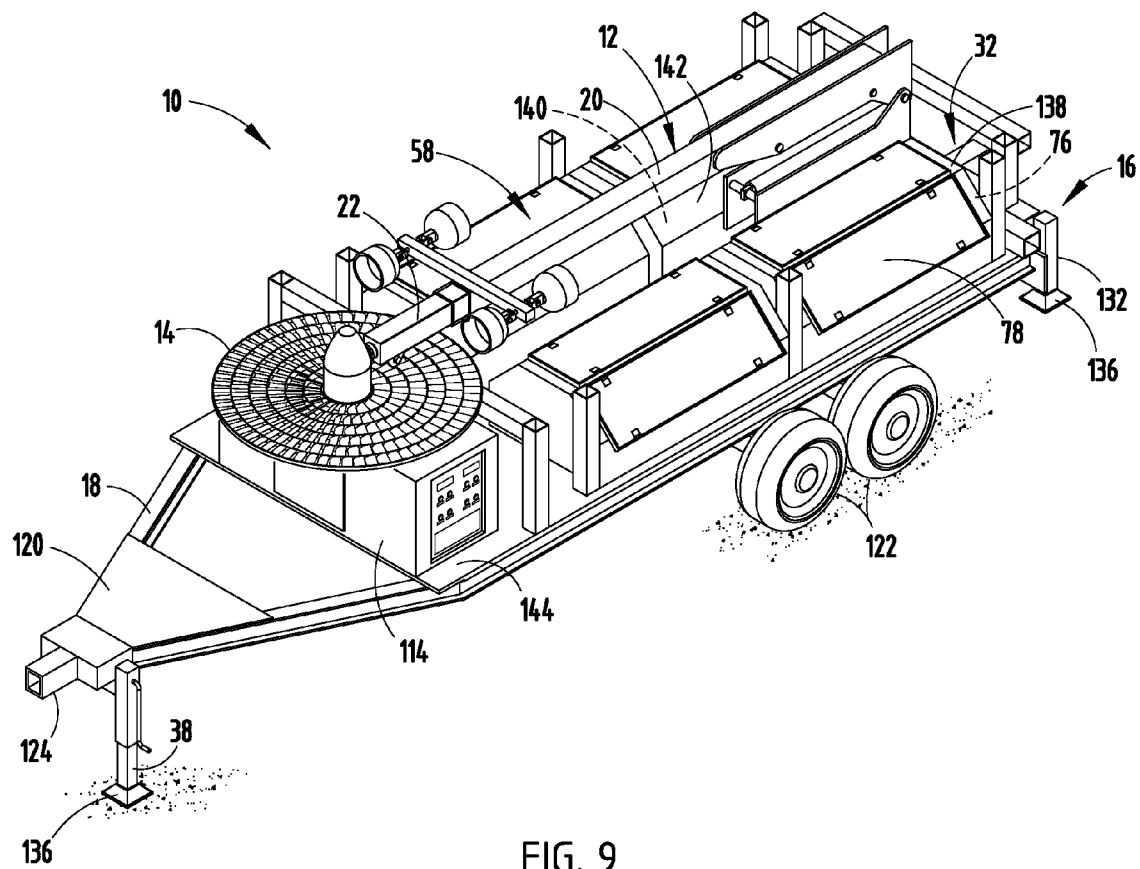


FIG. 8



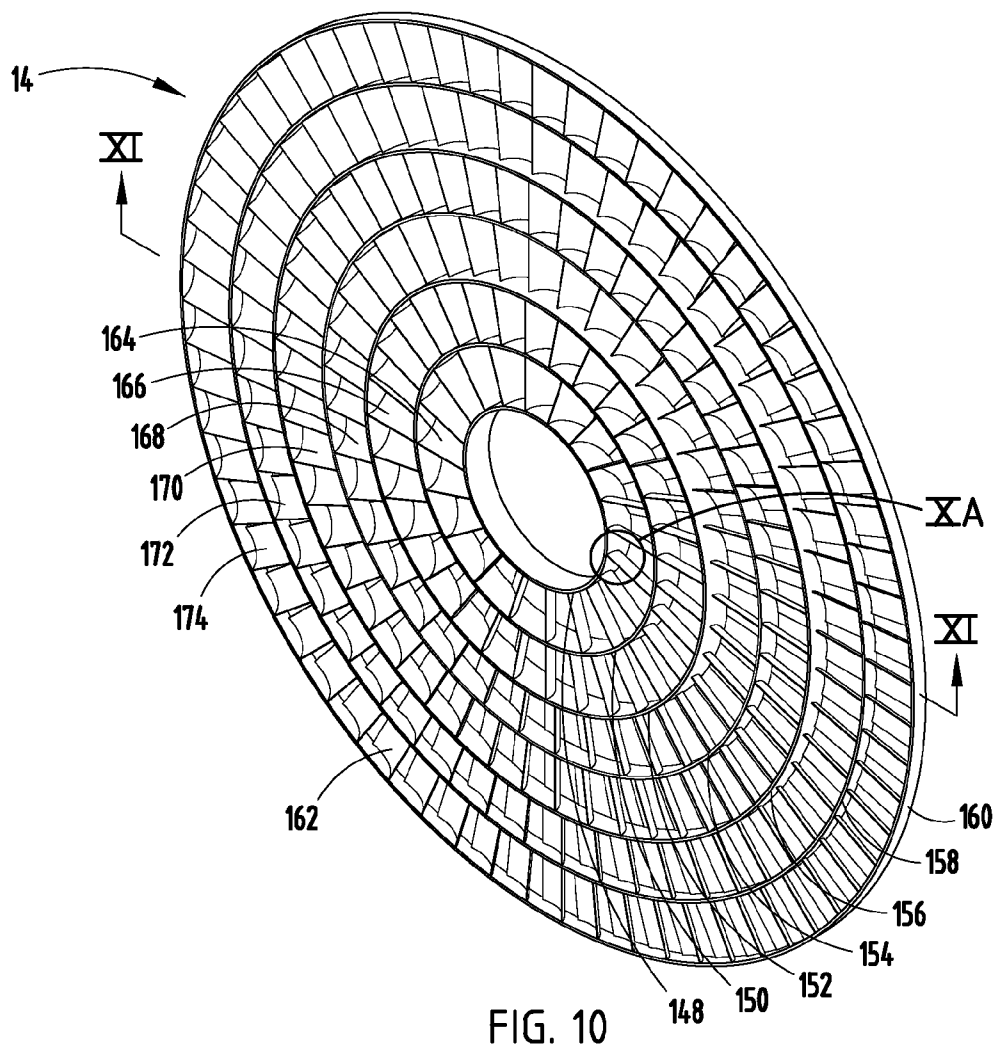


FIG. 10

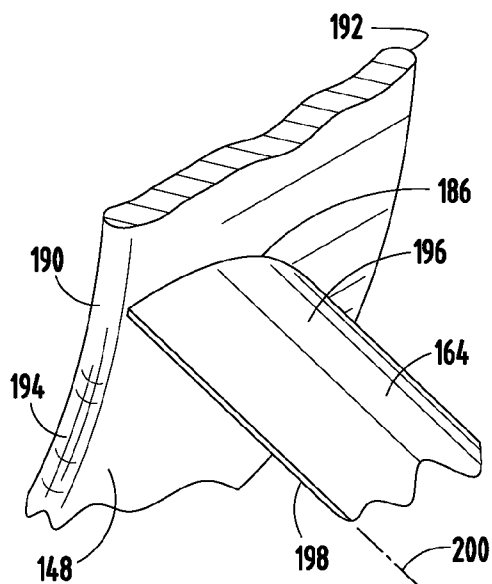


FIG. 10A

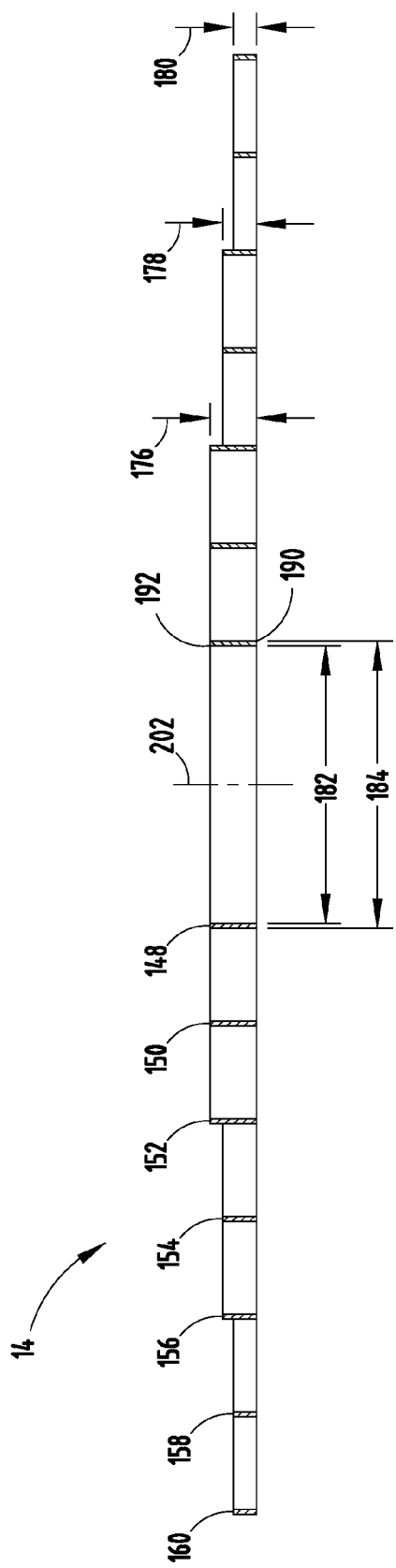


FIG. 11

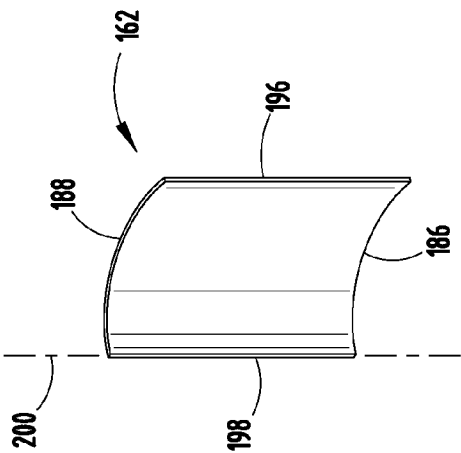


FIG. 12

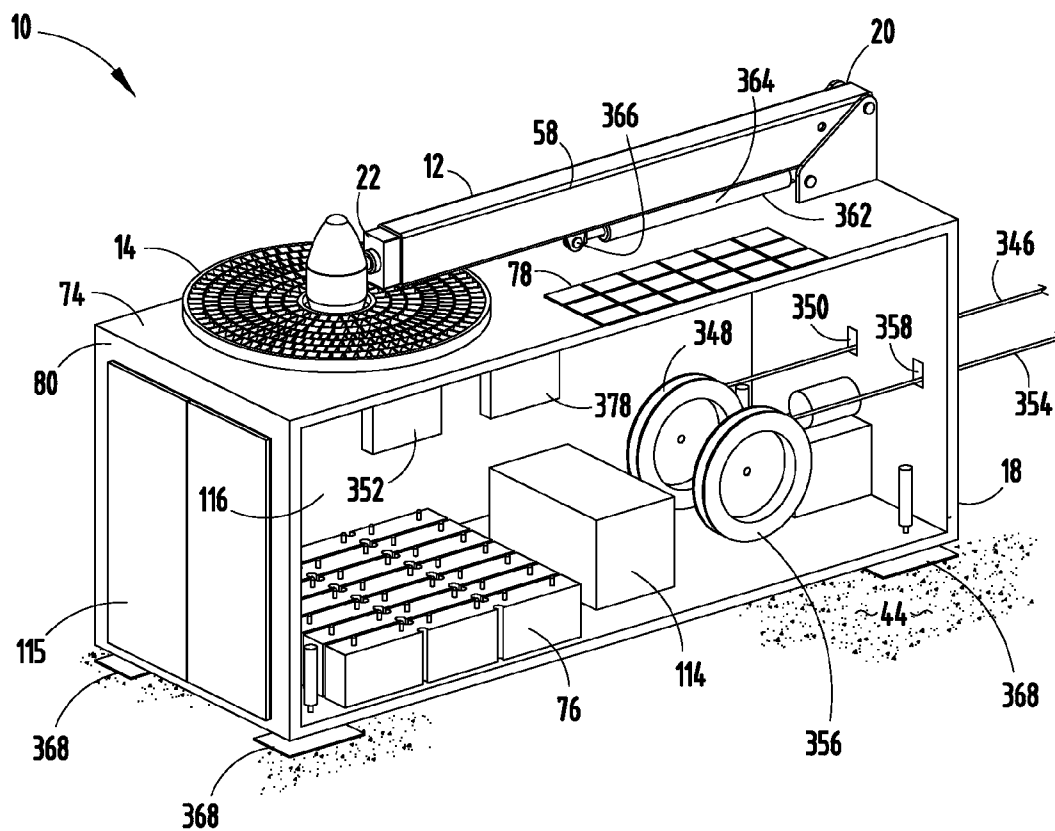


FIG. 13

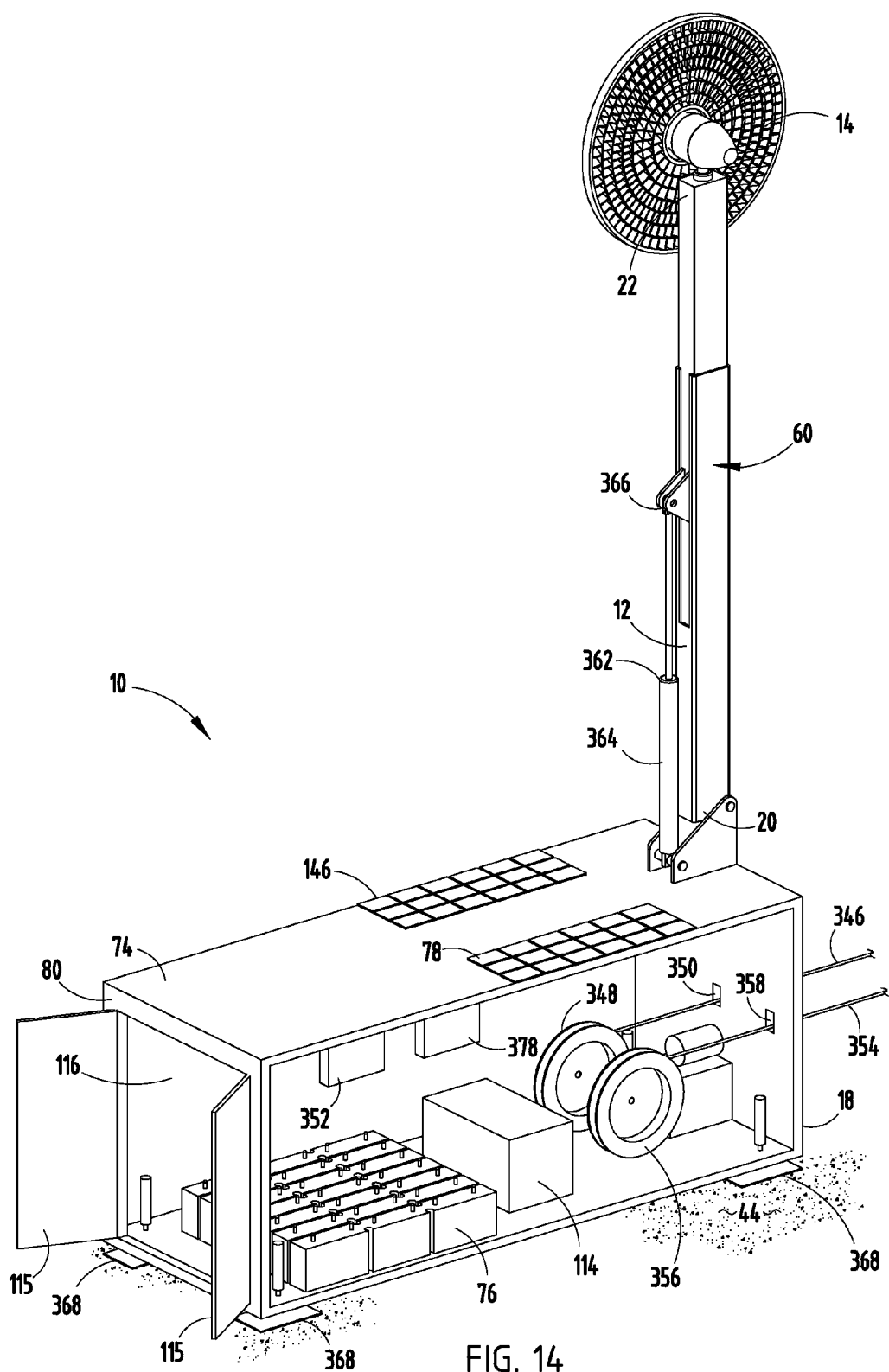


FIG. 14

1

MOBILE ELECTRICITY GENERATOR USING SOLAR, WIND, AND FUEL-GENERATED POWER

CROSS-REFERENCE TO RELATED APPLICATIONS

This application claims the priority benefit of U.S. Provisional Application No. 61/297,078 filed on Jan. 21, 2010, the entire disclosure of which is incorporated by reference, and U.S. Provisional Application No. 61/359,899 filed on Jun. 30, 2010, the entire disclosure of which is incorporated by reference.

BACKGROUND

The present invention generally relates to a mobile electricity generator using solar, wind, and/or fuel-generated power.

SUMMARY OF THE INVENTION

Described herein are several embodiments of a mobile electricity generator that uses sun-light, wind, and/or fuel as means to generate electricity. A method of using the mobile electricity generator to generate electricity to power a device that requires electricity is additionally described herein.

More specifically, described herein, in a first embodiment, is a mobile electricity generator comprising a telescopic boom, a wind turbine, a first retractable support leg, and a base. The telescopic boom can comprise a first end and a second end. The wind turbine can be attached to the second end of the telescopic boom and the wind turbine is capable of transforming wind into electricity. The first end of the telescopic boom can be attached to the base. The first retractable support leg can be attached to the base.

The first retractable support leg can be capable of both a retracted position and an extended position. The base can comprise a first housing that can at least partially house the first retractable support leg when the first retractable support leg is in the retracted position.

The mobile electricity generator can further comprise a second retractable support leg and a third retractable support leg. The second retractable support leg and the third retractable support leg can both be capable of both a retracted position and an extended position. The base can further comprise a second housing that at least partially houses the second retractable support leg when the second retractable support leg is in the retracted position and a third housing that at least partially houses the third retractable support leg when the third retractable support leg is in the retracted position.

The base can further comprise a bottom surface. The bottom surface can at least partially touch a ground surface when the first retractable support leg, the second retractable support leg, and the third retractable support leg are in their respective retracted positions. In contrast, the bottom surface may not touch the ground surface when the first retractable support leg, the second retractable support leg, and the third retractable support leg are in their respective extended positions.

The mobile electricity generator can further comprise an extension hydraulic cylinder and an active hydraulic cylinder. The extension hydraulic cylinder can comprise a cylinder base and a piston end. The active hydraulic cylinder can comprise a cylinder base and a piston end. The piston end of the extension hydraulic cylinder can be hinged to the second end of the telescopic boom. The cylinder base of the extension hydraulic cylinder can be attached to the first end of the

2

telescopic boom. The extension hydraulic cylinder can be capable of causing the second end of the telescopic boom to telescopically move away from the first end of the telescopic boom. The piston end of the active hydraulic cylinder can be hinged to the first end of the telescopic boom. The cylinder base of the active hydraulic cylinder and the first end of the telescopic boom can be hinged to the base. The telescopic boom can be capable of a resting position and an active position. The active hydraulic cylinder can be capable of causing the telescopic boom to move between the resting position and the active position.

The mobile electricity generator can further comprise a boom support. The boom support can comprise a lateral support, a first end, and a second end. The base can further comprise an external surface. The lateral support of the boom support can be attached to the external surface of the base. The cylinder base of the active hydraulic cylinder can be hinged to the first end of the boom support. The first end of the telescopic boom can be hinged to the second end of the boom support.

The base can further comprise a turbine cave, a boom cave, and a top surface. The first end of the telescopic boom can be hinged to the base within the boom cave. The cylinder base of the active hydraulic cylinder can be hinged to the base within the boom cave. When the telescopic boom is in the resting position, the boom cave can at least partially surround the telescopic boom and the turbine cave can at least partially surround the wind turbine, such that the top surface of the base is more highly elevated relative to the ground surface than the telescopic boom and the wind turbine.

The mobile electricity generator can further comprise a battery in electric communication with the wind turbine. The battery can be capable of at least temporarily storing the electricity generated by the wind turbine.

The mobile electricity generator can further comprise a first solar panel. The first solar panel can be capable of transforming light into electricity. The first solar panel can be attached to the base such that the external surface of the base does not impede the first solar panel's access to sun light. The first solar panel can be in electric communication with the battery, which can capable of at least temporarily storing the electricity generated by the first solar panel.

The mobile electricity generator can further comprise a solar panel swing. The solar panel swing can comprise a first end, a first side bracket, and a second side bracket. The first solar panel can comprise a first side and a second side. The first side of the first solar panel can be pivotally attached to the first side bracket and the second side of the first solar panel can be pivotally attached to the second side bracket. The first end of the solar panel swing can be hinged to the external surface of the base.

The mobile electricity generator can further comprise a first solar panel array and a second solar panel array. The first solar panel array can be capable of transforming light into electricity. The second solar panel array can be capable of transforming light into electricity. The first solar panel array and the second solar panel array can be attached to the external surface of the base. The first solar panel array and the second solar panel array can be in electric communication with the battery.

The mobile electricity generator can further comprise a first array support and a second array support. The first array support and the second array support can each comprise a first portion and a second portion. The second portion can be attached to the first portion at an array axis. The second portion can rotate relative to the first portion about the array axis. At least part of the first solar panel array can be attached

3

to the first portion of the first array support and at least part of the first solar panel array can be attached to the second portion of the first array support. At least part of the second solar panel array can be attached to the first portion of the second array support and at least part of the second solar panel array can be attached to the second portion of the second array support. A boom alley can separate the first solar panel array and the second solar panel array. The telescopic boom can be capable of being at least partially within boom alley when the telescopic boom is in the resting position.

The mobile electricity generator can further comprise a fuel-based generator. The fuel-based generator can be capable of transforming fuel into electricity. The fuel-based generator can be in electric communication with the battery. The base can further comprise an inner chamber. The inner chamber can at least partially house the fuel-based generator and the battery.

The mobile electricity generator can further comprise a light source attached to the telescopic boom.

In another embodiment, the mobile electricity generator can comprise a telescopic boom, a wind turbine, a first retractable support leg, and a base. The base can comprise a trailer. The trailer can comprise at least two wheels, a hitch, a first housing, a second housing, and a third housing. The mobile electricity generator can further comprise a second retractable support leg attached to the trailer, a third retractable support leg attached to the trailer, and a fourth retractable support leg attached to the trailer. The first end of the telescopic boom can be hinged to the trailer. The first retractable support leg, the second retractable support leg, and the third retractable support leg can all comprise a first part and a second part. The first part can comprise a support foot, and the first part can be capable of telescoping into the second part. The second part of the first retractable leg can be capable of telescoping into the first housing. The second part of the second retractable leg can be capable of telescoping into the second housing. The second part of the third retractable leg can be capable of telescoping into the third housing.

The mobile electricity generator can further comprise a first solar panel and a first battery, both supported by the trailer. The first solar panel can be capable of transforming light into electricity. The first battery can be electric communication with the wind turbine and the first solar panel. The first battery is capable of at least temporarily storing the electricity that the first solar panel and/or the wind turbine generates.

The mobile electricity generator can further comprise a first battery housing. The trailer can support the first battery housing. The first battery housing can at least partially house the first battery.

The mobile electricity generator can further comprise a second battery and a second battery housing. The trailer can support the second battery housing. The second battery housing can at least partially house the second battery. A boom alley can separate the first battery housing and the second battery housing. The telescopic boom is capable of a resting position and an active position. The telescopic boom is capable of being at least partially within boom alley when the telescopic boom is in the resting position.

The trailer can further comprise a platform. At the active position, the telescopic boom can be approximately perpendicular to the platform and the turbine can be able to rotate.

The mobile electricity generator can further comprise a second solar panel. The first solar panel can be mounted upon the first battery housing. The second solar panel can be mounted upon the second battery housing. It is possible that neither the telescopic boom nor the wind turbine cover either

4

of the first solar panel or the second solar panel, when the telescopic boom is in the resting position.

The mobile electricity generator can further comprise a fuel-based generator supported by the trailer. The fuel-based generator can be capable of transforming fuel into electricity. A light source can be attached to the telescopic boom.

In any embodiment, the wind turbine can comprise series of rings with sets of fins separating the rings. The series of rings can comprise a first ring, a second ring, a third ring, a fourth ring, a fifth ring, a sixth ring, and a seventh ring. The sets of fins can comprise a first set of fins separating the first ring from the second ring, a second set of fins separating the second ring from the third ring, a third set of fins separating the third ring from the fourth ring, a fourth set of fins separating the fourth ring from the fifth ring, a fifth set of fins separating the fifth ring from the sixth ring, and a sixth set of fins separating the sixth ring from the seventh ring.

Each of the rings can comprise a width. The width of the first ring can be larger than the width of the fourth ring and width of the fourth ring can be larger than the width of the seventh ring. The width of the first ring, the second ring, and the third ring can be the same but larger than the width of the fourth ring and the fifth ring, which in turn can be larger than the width of the sixth ring and the seventh ring. Each of the rings can comprise an inner diameter and an outer diameter, wherein the inner diameter of the second ring can be larger than the outer diameter of the first ring, the inner diameter of the third ring can be larger than the outer diameter of the second ring, the inner diameter of the fourth ring can be larger than the outer diameter of the third ring, the inner diameter of the fifth ring can be larger than the outer diameter of the fourth ring, the inner diameter of the sixth ring can be larger than the outer diameter of the fifth ring, the inner diameter of the seventh ring can be larger than the outer diameter of the sixth ring.

Each ring can comprise a wind facing edge and a wind trailing edge. The wind facing edge can comprise a radial surface. Each fin can comprise a convex surface. Each fin of each set of fins can be approximately equally spaced apart. The wind facing edge of each ring can define a plane. The plane defined by the wind facing edge of each ring can be the same. Each fin can comprise a leading edge. The leading edge can define an axis. The axis of each fin can be on approximately the same plane defined by the wind facing edge of each ring. The wind trailing edge of the first ring can define a trailing plane. The wind trailing edges of the second ring and the third ring can define the same plane as the trailing plane of the first ring.

The convex surface of each of the fins of the first set of fins and the second set of fins can approximately touch the plane defined by the trailing plane of the first ring, the second ring, and the third ring. The wind trailing edges of the fourth ring and the fifth ring can lie in the same plane relative to each other but in a different plane relative to the plane defined by the wind trailing edges of the first ring, the second ring, and the third ring. The convex surface of each fin of the third set and fourth set of fins can approximately touch the plane defined by the wind trailing edges of the fourth ring and the fifth ring.

The wind trailing edges of the sixth ring and seventh ring can lie in the same plane relative to each other but in a different plane relative to the plane defined by the wind trailing edges of the fourth ring and the fifth ring. The convex surface of each fin of the fifth set and sixth set of fins can approximately touch the plane defined by the wind trailing edges of the sixth ring and the seventh ring.

5

The wind turbine can further comprise an axis of turbine rotation, wherein every ring can be concentric around the axis of turbine rotation. The axis of each fin can be directed towards and approximately intersect the axis of turbine rotation.

BRIEF DESCRIPTION OF THE SEVERAL VIEWS OF THE DRAWINGS

FIG. 1 depicts a perspective view of a first embodiment of a mobile electricity generator **10** with the first retractable leg **16** in an extended position **26**;

FIG. 2 depicts a perspective view of a first embodiment of a mobile electricity generator **10** with the first retractable leg **16** in a retracted position **24**;

FIG. 3 depicts a perspective view of a second embodiment of a mobile electricity generator **10** with the turbine cave **70** and the boom cave **72** and the telescopic boom **12** in the active position **60**;

FIG. 4 depicts a perspective view of a second embodiment of the mobile electricity generator **10** with the turbine cave **70** and the boom cave **72** and the telescopic boom **12** in the resting position **58**;

FIGS. 5A-C depicts a perspective view of the solar panel swing **84**;

FIG. 6 depicts a perspective view of another embodiment of the mobile electricity generator **10** with a first solar panel array **98** and a second solar panel array **100**;

FIG. 7 depicts a perspective view of another embodiment of the mobile electricity generator **10** with the base **18** comprising a trailer **120**;

FIG. 8 depicts a rear perspective view of the trailer **120**;

FIG. 9 depicts a perspective view of the trailer **120**, with the telescopic boom **12** in the resting position **58**;

FIG. 10 depicts a perspective view of a first embodiment of a wind turbine **14**;

FIG. 10A depicts an enlarged partial top perspective view of area XA and FIG. 10;

FIG. 11 depicts a side view of the first embodiment of the wind turbine **14** at cross section XI of FIG. 10;

FIG. 12 depicts a prospective view of a fin **162** used for the first embodiment of the wind turbine **14**;

FIG. 13 depicts a perspective view of another embodiment of the mobile electricity generator **10** with the telescopic boom **12** in the resting position **58** and the wind turbine **14** not covering the first solar panel **78**; and

FIG. 14 depicts a perspective view of the embodiment of the mobile electricity generator **10** of FIG. 13 with the telescopic boom **12** in the active position **60**.

DETAILED DESCRIPTION OF THE PREFERRED EMBODIMENTS

For purposes of description herein, the terms “upper,” “lower,” “right,” “left,” “rear,” “front,” “vertical,” “horizontal,” and derivatives thereof shall relate to the embodiments as oriented in FIG. 1. However, it is to be understood that the invention may assume various alternative orientations and step sequences, except where expressly specified to the contrary. It is also to be understood that the specific devices and processes illustrated in the attached drawings, and described in the following specification are exemplary embodiments of the inventive concepts defined in the appended claims. Hence, specific dimensions and other physical characteristics relating to the embodiments disclosed herein are not to be considered as limiting, unless the claims expressly state otherwise.

6

In a first embodiment, as shown in FIG. 1, mobile electricity generator **10** can comprise a telescopic boom **12**, a wind turbine **14**, a first retractable support leg **16**, and a base **18**. The telescopic boom **12** can comprise a first end **20** and a second end **22**. The wind turbine **14** can be attached to the second end **22** of the telescopic boom **12** and the wind turbine **14** is capable of transforming wind into electricity. More specifically, the wind turbine **14** converts the kinetic energy of wind into mechanical energy, which is further converted into electricity. The first end **20** of the telescopic boom **12** can be attached to the base **18**. The first retractable support leg **16** can be attached to the base **18**. The wind turbine **14** can take any form, such as the traditional three blade form, or the novel form described herein below. Ventera Energy (Duluth, Minn.) manufactures a three blade wind turbine. Southwest Windpower (Flagstaff, Ariz.) manufactures a two blade wind turbine under the trade name Whisper 500 (trademark), and a three blade wind turbine under the trade name Skystream (trademark). The telescopic boom **12** should be made from a material that is sufficiently sturdy to support the turbine **14** in use, such as steel or aluminum.

The first retractable support leg **16** can be capable of both a retracted position **24**, as shown in FIG. 2, and an extended position **26**, as shown in FIG. 1. The base **18** can comprise a first housing **28** that can at least partially house the first retractable support leg **16** when the first retractable support leg **16** is in the retracted position **24**.

The mobile electricity generator **10** can further comprise a second retractable support leg **30** and a third retractable support leg **32**. The second retractable support leg **30** and the third retractable support leg **32** can both be capable of both a retracted position (as shown in FIG. 2) and an extended position (as shown in FIG. 1), much like the retracted position **24** and extended position **26** described for first retractable support leg **16**. The base **18** can further comprise a second housing **34** that at least partially houses the second retractable support leg **30** when the second retractable support leg **30** is in the retracted position (as shown in FIG. 2) and a third housing **36** that at least partially houses the third retractable support leg **32** when the third retractable support leg **32** is in the retracted position (as shown in FIG. 2). A base **18** taking a rectangular form, as that of the embodiment shown in FIGS. 1 and 2, may find it beneficial to incorporate a fourth retractable support leg **38**, which can be capable of both a retracted position (as shown in FIG. 2) and an extended position (as shown in FIG. 1). In such an embodiment, the base **18** can further comprise a fourth housing **40** that at least partially houses the fourth retractable support leg **38** when the fourth retractable support leg **38** is in the retracted position (as shown in FIG. 2). The base **18** can comprise as many retractable support legs as the shape of the base **18** and the force generated by wind hitting the wind turbine **14** may require to hold the telescopic boom **12** upright while in use (that is, while in the active position **60**) and prevent the mobile electricity generator **10** from tipping over. The retractable support legs can be manipulated through manual cranks, hydraulics, or electric motors.

The base **18** can further comprise a bottom surface **42**. The bottom surface **42** can at least partially touch a ground surface **44** when the first retractable support leg **16**, the second retractable support leg **30**, the third retractable support leg **32**, and in this embodiment, the fourth retractable support leg **38**, are in their respective retracted positions (as shown in FIG. 2). In contrast, the bottom surface **42** may not touch the ground surface **44** when the first retractable support leg, **16** the second retractable support leg **30**, the third retractable support leg **32**, and in this embodiment, the fourth retractable support leg **38**,

are in their respective extended positions (as shown in FIG. 1), although such a lifting effect is unnecessary. The base 18 can be generally rectangular in shape (such as dimensions of 8 feet×8 feet×20 feet) but can take a variety of shapes and sizes. The base 18, among other things, can serve the purpose of at least partially covering electronic parts and the fuel-based generator 114, and providing a base for any solar panels used, such as first solar panel 78, and telescopic boom 12. The base 18 can be made from steel.

The mobile electricity generator 10 can further comprise an extension hydraulic cylinder 46 and an active hydraulic cylinder 48. The extension hydraulic cylinder 46 can comprise a cylinder base 50 and a piston end 52. The active hydraulic cylinder 48 can comprise a cylinder base 54 and a piston end 56. The piston end 52 of the extension hydraulic cylinder 46 can be hinged to the second end 22 of the telescopic boom 12. The cylinder base 50 of the extension hydraulic cylinder 46 can be attached (such as hinged) to the first end 20 of the telescopic boom 12. The extension hydraulic cylinder 46 can be capable of causing the second end 22 of the telescopic boom 12 to telescopically move away from the first end 20 of the telescopic boom 12. In other words, activation of the extension hydraulic cylinder 46 causes the piston end 52 to extend away from the cylinder base 50 and thus cause second end 22 of the telescopic boom 12 to move away from the first end 20 of the telescopic boom 12, and deactivation of the extension hydraulic cylinder 46 causes the piston end 52 to retract into the cylinder base 50 and thus cause second end 22 of the telescopic boom 12 to move into the first end 20 of the telescopic boom 12. For example, the part of the telescopic boom 12 nearest the first end 20 can be a relatively larger tube, while the part of the telescopic boom 12 nearest the second end 22 can be relatively smaller tube, and the smaller tube can slide in and out of larger tube. The piston end 56 of the active hydraulic cylinder 48 can be hinged to the first end 20 of the telescopic boom 12. The cylinder base 54 of the active hydraulic cylinder 48 and the first end 20 of the telescopic boom 12 can be hinged to the base 18 directly (such as on the top surface 74) or via a support structure as shown in FIGS. 1 and 2 and described in more detail below. The telescopic boom 12 can be capable of a resting position 58 (as shown in FIG. 2) and an active position 60 (as shown in FIG. 1). The active hydraulic cylinder 48 can be capable of causing the telescopic boom 12 to move between the resting position 58 and the active position 60. In other words, activation of the active hydraulic cylinder 48 causes the piston end 56 to extend away from the cylinder base 54 and thus cause first end 20 of the telescopic boom 12 to move from a relative horizontal position (resting position 58) to a relative vertical position (active position 60) relative to the ground surface 44, and deactivation of the active hydraulic cylinder 48 causes the piston end 56 to retract into the cylinder base 54 and thus cause first end 20 of the telescopic boom 12 to move from a relative vertical position (active position 60) to a relative horizontal position (resting position 58) relative to the ground surface 44. The wind turbine 14 is better able to generate electricity when in the active position 60 rather than the resting position 58. At the resting position 58, the telescopic boom 12 can be approximately parallel to the top surface 74 of the base 18, and the wind turbine 14 can at least partially lie against the top surface 74 of the base 18. Consequently, the turbine 14 will be less prone to rotate and will generally block less sunlight, which would be advantageous for the ability of the solar panels, such as first solar panel 78, to generate electricity. At the active position 60, the telescopic boom 12 can be approximately perpendicular to the top surface 74 of the base 18, and the wind turbine 14 is able to rotate. It may be

advantageous for electricity generation to place the telescopic boom 12 in the active position 60 while the wind is blowing, and in the resting position 58 when it is not.

The mobile electricity generator 10 can further comprise a boom support 62. The boom support 62 can be added to the base 18 to add structural rigidity to the mobile electricity generator 10, so that the generator 10 can withstand the forces generated when the telescopic boom 12 is in the active position 60 and wind is hitting the wind turbine 14. The boom support 62 can comprise a lateral support 64, a first end 66, and a second end 68. The boom support 62 can be attached to the base 18, for example by attaching the ends of the first end 66 and second end 68 to the base 18. The lateral support 64 separates the first end 66 from the second end 68. The cylinder base 54 of the active hydraulic cylinder 48 can be hinged to the first end 66 of the boom support 62. The first end 20 of the telescopic boom 12 can be hinged to the second end 68 of the boom support 62.

As shown in FIGS. 3 and 4, in another embodiment, the base 18 can further comprise a turbine cave 70, a boom cave 72, and a top surface 74. The first end 20 of the telescopic boom 12 can be hinged to the base 18 within the boom cave 72. The cylinder base 54 of the active hydraulic cylinder 48 can be hinged to the base 18 within the boom cave 72. When the telescopic boom 12 is in the resting position 58 (FIG. 4), the boom cave 72 can at least partially surround the telescopic boom 12 and the turbine cave 70 can at least partially surround the wind turbine 14, such that the top surface 74 of the base 18 is more highly elevated relative to the ground surface 44 than the telescopic boom 12 and the wind turbine 14. This design can allow stacking of one mobile electricity generator 10 on top of another generator 10, which can be beneficial for transportation of multiple generators 10.

The mobile electricity generator 10 can further comprise a first solar panel 78, as shown in FIG. 1. The first solar panel 78 can be capable of transforming light into electricity and is also known as a photovoltaic module or panel. More specifically, the first solar panel 78 is an interconnected assembly of photovoltaic cells, which are thought to transform light energy (photons) from the sun into electricity. The base 18 can further comprise an external surface 80, which in this embodiment includes top surface 74 and side surface 82. The first solar panel 78 can be attached to the base 18 such that the external surface 80 of the base 18 does not impede the first solar panel's 78 access to sun light. The first solar panel 78 can be in electric communication with the battery 76, which can be capable of at least temporarily storing the electricity generated by the first solar panel 78. The mobile electricity generator 10 can comprise any number of additional solar panels, because the more solar panels 78 that are present, the more electricity the mobile electricity generator 10 can produce. The mobile electricity generator 10 can include a solar monitor and an inverter (discussed more fully below). Each solar panel, including first solar panel 78, can be manipulated to optimally position the light collecting surface of each solar panel towards the sun. Sharp Electronics (New Jersey) makes such solar panels.

As shown enlarged in FIGS. 5A-C, the mobile electricity generator 10 can further comprise a solar panel swing 84. The solar panel swing 84 can comprise a first end 86, a first side bracket 88, and a second side bracket 90, which need not be separate pieces—the solar panel swing 84 can be a unitary structure. The first solar panel 78 can comprise a first side 92 and a second side 94. The first side 92 of the first solar panel 78 can be pivotally attached to the first side bracket 88 and the second side 94 of the first solar panel 78 can be pivotally attached to the second side bracket 90. The first end 86 of the

solar panel swing can be hinged to the base 18, such as the external surface 80 of the base 18 (as shown in FIG. 1). A protective cover 96 can be placed over the back of the first solar panel 78. In use, the solar panel swing 84 can be positioned to provide the most advantageous angle relative to the sun for the first solar panel 78, as shown in FIG. 3. When not in use, the first solar panel 78 can be rotated (as shown in the progression of FIGS. 5A through 5C) so that the protective cover 96 is exposed and the solar panel swing 84 lies approximately flush against the external surface 80 of the base 18, as shown in FIG. 4. The mobile electricity generator can include any number of additional solar panel swings 84, as shown in FIG. 3. Each solar panel swing 84 can include any number of additional solar panels in a similar manner, and FIGS. 5A-C show two solar panels.

As shown in FIG. 6, the mobile electricity generator 10 can further comprise a first solar panel array 98 and a second solar panel array 100. The first solar panel array 98 can be capable of transforming light into electricity. The second solar panel array 100 can be capable of transforming light into electricity. The first solar panel array 98 and the second solar panel array 100 can be attached to the external surface 80 of the base 18. The first solar panel array 98, and any other solar panel array utilized, can be in electric communication with the battery 76.

The mobile electricity generator 10 can further comprise a first array support 102 and a second array support 104. The first array support 102 and the second array support 104 can each comprise a first portion 106 and a second portion 108. The second portion 108 can be attached to the first portion 106 at an array axis 110. The second portion 108 can rotate relative to the first portion 106 about the array axis 110. This arrangement allows the second portion 108 to fold onto the first portion 106, which narrows the profile of the generator 10 for transportation purposes and protects the solar panels during transport. At least part of the first solar panel array 98 can be attached to the first portion 106 of the first array support 102 and at least part of the first solar panel array 98 can be attached to the second portion 108 of the first array support 102. In other words, both the first portion 106 and the second portion 108 of the first solar panel array 98 can support solar panels (such as first solar panel 78). Likewise, at least part of the second solar panel array 100 can be attached to the first portion 106 of the second array support 104 and at least part of the second solar panel array 100 can be attached to the second portion 108 of the second array support 104. A boom alley 112 can separate the first solar panel array 98 and the second solar panel array 100. The telescopic boom 12 can be capable of being within boom alley 112 when the telescopic boom 12 is in the resting position 58.

The mobile electricity generator 10 can further comprise a fuel-based generator 114 as shown in FIG. 1. The fuel-based generator 114 can be capable of transforming fuel into electricity. The fuel-based generator 114 can be in electric communication with the battery 76. The base 18 can further comprise an inner chamber 116 (see FIG. 2), such as an inner chamber 116 created by the bottom surface 42, the top surface 74, and the side surfaces 82. The inner chamber 116 can at least partially house the fuel-based generator 114 and the battery 76. A fuel-based generator 116 is typically the combination of a combustion engine and an electrical generator (alternator). The fuel-based generator 18 can supply 220 volt alternating current. The fuel-based generator 114 can be supplied by Caterpillar, Cummins, or John Deere, among others. The fuel for the fuel-based generator 114 can be diesel fuel, but can also be without limitation biodiesel, natural gas, hydrogen, wood, oil, or gasoline.

The mobile electricity generator 10 can further comprise a battery 76 ("battery" includes a bank of batteries 76) at least partially stored in the inner chamber 116 of the base 18. The battery 76 is in electric communication with the wind turbine 14, solar panels 78, 146, 98, and 100, and the fuel-based generator 114. The battery 76 is capable of at least temporarily storing the electricity generated from those elements. The battery 76 can be a bank of 12 volt deep cycle, zero maintenance, batteries. Both the wind turbine 14 and the solar panels 78, 146, 98 typically generate direct current electricity and that direct current electricity can be conducted to the battery 76, with alternatively a current and voltage measurement device and display placed between. Hawker (Ooltewah, Tenn.) makes such a battery, as does U.S. Battery Manufacturing Co. (Evans, Ga.), and Surette Battery Company under the trademark Rolls. The direct current electricity generated by the wind turbine 14 and the solar panels 78, 146, 98 can alternatively bypass the battery 76 (if, for example, the battery 76 is fully charged) and be directed directly to the length of direct current cable 346 (discussed below) or the inverter 352 (discussed below) and the associated length of alternating current cable 354 (discussed below). There can be an access door 115 to provide human access into the inner chamber 116, as shown in FIG. 4.

The mobile electricity generator 10 can further comprise a light source 118 attached to the telescopic boom 12, such as the first end 20 of the telescopic boom 12, or on the cylinder base 50.

In another embodiment of the mobile electricity generator 10, as shown in FIGS. 13 and 14, the telescopic boom 12 can be positioned relative to the first solar panel 78 so that the telescopic boom 14 does not cover the first solar panel 78 when the telescopic boom 14 is in the resting position 58, even when the solar panels are placed onto the top surface 74. FIGS. 13 and 14 show the base 18 with the near most wall removed to show the contents of the inner chamber 116.

In this embodiment, the mobile electricity generator 10 further comprises at least one leveler 368 in communication with the ground surface 44, wherein the at least one leveler 368 is capable of moving the plane defined by the top surface 74 of the base 18. For example, base 12 can comprises four levelers 368, one attached to each corner of the base 18 nearest the ground surface 44, and each independently controllable. Such leveling capability is advantageous when the telescopic boom 12 is to be moved to the active position 60 so that the top surface 74 is perfectly leveled (and/or the generator 10 perfectly balanced)—otherwise the rotation of the turbine 14 would cause the mobile electricity generator 10 to rock and potentially break. The levelers 368 can be manipulated by hydraulic or electronic motor means. For example, a combination of a high pressure hydraulic line and a low pressure hydraulic line (not shown) can be supplied to each leveler 368, to allow for both large and minute movements of the leveler 368. The levelers 368 can be external to the base 18 and connected to the base 18 via scaffolding (not shown). Such an embodiment would further stabilize the base 18 when the telescopic boom 12 is in the active position 60. The base 18 can display a leveling gauge (not shown).

In this embodiment, the telescopic boom 12 can move between the resting position 58 (FIG. 13) and the active position 60 (FIG. 14) via just one hydraulic cylinder 362 comprising a cylinder base 364 and a piston end 366. The cylinder base 364 is hinged to the top surface 74 of the base 18 and the piston end 366 is hinged to the first end 20 of the telescopic boom 12. Therefore, as the hydraulic cylinder 362 is activated, the piston end 366 moves away from the cylinder base 364 and thus forces the telescopic boom 12 to move to

11

the active position 60. As the hydraulic cylinder 362 raises the telescopic boom 12 to the active position 60, the first end 20 telescopes away from the second end 22 (and thus extending the length of the telescopic boom 12) via a cable pulley system (not shown). When the telescopic boom 12 is in the active position 60, the length of the telescopic boom 12 can be approximately thirty-five feet. As the hydraulic cylinder 362 is manipulated to lower the telescopic boom 12 to the resting position 58, the first end 20 telescopes towards the second end 22 (and thus shortens the length of the telescopic boom 12) via the cable system (not shown).

The mobile electricity generator 10 can further comprise a length of direct current cable 346 capable of conducting direct current. The length of direct current cable 346 is at least partially housed within the inner chamber 116 of the base 18 and in electric communication with the battery 76 (to draw electricity from battery 76) and in electric communication with each of the turbine 14, any solar panel, such as first solar panel 78, and fuel-based generator 114 to draw direct current electricity from those electricity producing elements. A bank of switches can alter the voltage of the direct current running from the battery 76 through the length of direct current cable 346, for example 12 volt and 24 volt.

The mobile electricity generator 10 can further comprise a first reel 348 at least partially housed within the inner chamber 116 of the base 18. Part of the length of direct current cable 346 can be reeled around first reel 348 and the reel 348 can be wound in either direction, depending on whether the length of direct current cable 346 needs to be returned to the inner chamber 116 of the base 18 or drawn from the inner chamber 116 of the base 18, such as when in use. Moreover, the base 18 can further comprise a first aperture 350 through which at least part of the length of direct current cable 346 can extend from the inner chamber 116 of the base 18 to an area external to the base 18, for connection to a device that requires electricity to work. Including a length of direct current cable 346 allows the user to keep the device that needs electricity in its current position, eliminating the need to bring the device that needs electricity to the mobile electricity generator 10.

The mobile electricity generator 10 can further comprise an inverter 352 at least partially housed within the inner chamber 116 of the base 18 and in electronic communication with the battery 76 and also with the turbine 14 and any solar panels, such as first solar panel 78. The inverter 352 is capable of converting electricity, such as electricity from the battery 76, into alternating current, such as 110 volt alternating current. Outback Power Technologies (Arlington, Wash.) makes such an inverter, as does SMA America, LLC under the trade name Sunny Boy (In such an embodiment, the mobile electricity generator 10 further comprises a length of alternating current cable 354 capable of conducting alternating current. The length of alternating current cable 354 is at least partially housed within the inner chamber 116 of the base 18 and in electric communication with the inverter 352 and/or the fuel-based generator 114 and thus provides the same advantage as the length of direct current cable 346 described above. In such an embodiment, the mobile electricity generator 10 further comprises a second reel 356 at least partially housed within the inner chamber 116 of the base 18 and capable accepting the length of alternating current cable 354. Part of the length of alternating current cable 354 can be reeled around second reel 356 and the second reel 356 can be wound in either direction, depending on whether the length of alternating current cable 354 needs to be returned to the inner chamber 116 of the base 18 or extracted from the inner chamber 116 of the base 18, such as when in use. Moreover, the base 18 can further comprise a second aperture 358 through which at least

12

part of the length of alternating current cable 354 can extend from the inner chamber 116 of the base 18 to an area external to the base 18, for connection to a device that requires electricity to work. Both the first reel 348 and the second reel 356 can be spring wound reels.

The generator 10 can further comprise a monitoring station 378. The monitoring station 378 can include a display of the electricity that the turbine 14, solar panels (such as first solar panel 78), and fuel-based generator 114 are producing, as well as the electricity stored in the battery 76 and being drawn from the battery 76 via length of direct current cable 346 and/or length of alternating current cable 354. All hydraulically or motor driven components (such as hydraulic cylinder 362 and levelers 68, in this embodiment, or extension hydraulic cylinder 46 and active hydraulic cylinder 48 in the above embodiments) draw the required electricity directly from the mobile electricity generator 10 itself, such as the battery 76 or, if the battery 76 has inadequate charge, the fuel-based generator 114.

In another embodiment of the mobile electricity generator 10, as shown in FIGS. 7-9, the base 18 can comprise a trailer 120. The trailer 120 can comprise at least two wheels 122, a hitch 124, a first housing 126, a second housing 128, and a third housing 130. The mobile electricity generator 10 can further comprise a first retractable support leg 16 (see FIG. 8), second retractable support leg 30, a third retractable support leg 32, and a fourth retractable support leg 38 (see FIG. 7). The first end 20 of the telescopic boom 12 can be hinged to the trailer 120 (see FIG. 7). The first retractable support leg 16 (see FIG. 8), the second retractable support leg 30, and the third retractable support leg 32 can all comprise a first part 132 and a second part 134. The first part 132 can comprise a support foot 136, and the first part 132 can be capable of telescoping into the second part 134. The second part 134 of the first retractable leg 16 can be capable of telescoping into the first housing 126. The second part 134 of the second retractable leg 30 can be capable of telescoping into the second housing 128. The second part 134 of the third retractable leg 32 can be capable of telescoping into the third housing 130. The support feet 136 can also telescope, so as to raise or lower the support foot 136 relative to the ground surface 44.

The mobile electricity generator 10 can further comprise a first solar panel 78 (see FIG. 7) and a first battery 76, both supported by the trailer 120. The first solar panel 78 can be capable of transforming light into electricity. The first battery 76 can be electric communication with the wind turbine 14 and the first solar panel 78. The first battery 76 is capable of at least temporarily storing the electricity that the first solar panel 78 and/or the wind turbine 14 generates. The first battery 76 can be a collection of individual batteries.

The mobile electricity generator 10 can further comprise a first battery housing 138. The trailer 120 can support the first battery housing 138. The first battery housing 138 can at least partially house the first battery 76.

The mobile electricity generator 10 can further comprise a second battery 140 and a second battery housing 142. The trailer 120 can support the second battery housing 142. The second battery housing 142 can at least partially house the second battery 140. A boom alley 112 can separate the first battery housing 138 and the second battery housing 142. The telescopic boom 12 is capable of a resting position 58 (as shown in FIG. 9) and an active position 60 (as shown in FIG. 7). The telescopic boom 12 is capable of being within boom alley 112 when the telescopic boom 12 is in the resting position 58 (as shown in FIG. 9).

13

The trailer 120 can further comprise a platform 144. At the active position 60 (see FIG. 7), the telescopic boom 12 can be approximately perpendicular to the platform 144 and the wind turbine 14 can be able to rotate, in order to generate electricity.

The mobile electricity generator 10 can further comprise a second solar panel 146. The first solar panel 78 can be mounted upon the first battery housing 138. The second solar panel 146 can be mounted upon the second battery housing 142. It is possible that neither the telescopic boom 12 nor the wind turbine 14 cover either of the first solar panel 78 or the second solar panel 146, when the telescopic boom 12 is in the resting position 58, in the event that generation of electricity from sunlight would be advantageous but not from wind.

The mobile electricity generator 10 can further comprise a fuel-based generator 114 supported by the trailer 120, such as on platform 144. The fuel-based generator 114 can be capable of transforming fuel into electricity. A light source 118 can be attached to the telescopic boom 12, such as the first end 20 of the telescopic boom 12.

The mobile electricity generator 10 can provide electricity to a device that needs electricity. The generator 10 can provide electricity in whatever form the device requires, such as direct current or alternating current. The electricity can come from charged battery 76, or from one or more of the solar panels (such as first solar panel 78, second solar panel 146, first solar panel array 98, or second solar panel array 100), wind turbine 14, or fuel-based generator 114, using a converter, inverter, and other devices as needed. The device can be the light source 118.

In any embodiment of the mobile electricity generator 10, and as a standalone component that can be employed separately, on other electricity generators, as shown in FIGS. 10-12, the wind turbine 14 can comprise a series of rings, such as a first ring 148, a second ring 150, a third ring 152, a fourth ring 154, a fifth ring 156, a sixth ring 158, and a seventh ring 160. A number of fins 162 can be spaced between the rings. For example, in this embodiment, a first set 164 of fins 162 separates the first ring 148 from the second ring 150, a second set 166 of fins 162 separates the second ring 150 from the third ring 152, a third set 168 of fins 162 separates the third ring 152 from the fourth ring 154, a fourth set 170 of fins 162 separates the fourth ring 154 from the fifth ring 156, a fifth set 172 of fins 162 separates the fifth ring 156 from the sixth ring 158, and a sixth set 174 of fins 162 separates the sixth ring 158 from the seventh ring 160.

Each of the rings can comprise a width, and the width of the rings can generally decrease from the innermost rings towards the outermost rings as generally shown in FIG. 11. In this embodiment, for example, the width 176 of the first ring 148, the second ring 150, and the third ring 152 is the same but is larger than the width 178 of the fourth ring 154 and the fifth ring 156, which in turn is larger than the width 180 of the sixth ring 158 and the seventh ring 160.

Each of the rings can comprise an inner diameter and an outer diameter. In this embodiment, for example, first ring 148 comprises an inner diameter 182 and an outer diameter 184. Each successive ring has an inherent inner diameter and outer diameter. In this embodiment, the inner diameter of the second ring 150 is larger than the outer diameter of the first ring 148, the inner diameter of the third ring 152 is larger than the outer diameter of the second ring 150, and so on.

As shown in FIG. 12, each fin 162 can comprise a first end 186 and a second end 188. The first end 186 of each of the first set 164 of fins 162 can be attached to the outer diameter 184 of the first ring 148, as shown in FIG. 10A. The second end 188 of each of the first set 164 of fins 162 can be attached to the inner diameter of the second ring 150. The first end 186 of each of the second set 166 of fins 162 can be attached to the outer diameter of the second ring 150, and the second end 188

14

of each of the second set 166 of fins 162 can be attached to the inner diameter of the third ring 152. The first end 186 of each of the third set 168 of fins 162 can be attached to the outer diameter of the third ring 152, and the second end 188 of each of the third set 168 of fins 162 can be attached to the inner diameter of the fourth ring 154. The first end 186 of each of the fourth set 170 of fins 162 can be attached to the outer diameter of the fourth ring 154, and the second end 188 of each of the fourth set 170 of fins 162 can be attached to the inner diameter of the fifth ring 156. The first end 186 of each of the fifth set 172 of fins 162 can be attached to the outer diameter of the fifth ring 156, and the second end 188 of each of the fifth set 172 of fins 162 can be attached to the inner diameter of the sixth ring 158. The first end 186 of each of the sixth set 174 of fins 162 can be attached to the outer diameter of the sixth ring 158, and the second end 188 of each of the sixth set 174 of fins 162 can be attached to the inner diameter of the seventh ring 160. In general, the first end 186 of each set of fins 162 is attached to the outer diameter of one ring and the second end 188 is attached to the inner diameter of the next larger concentric ring, so as to not be limited in the number of rings that the wind turbine 14 can have.

As shown in FIG. 10A, one or more of the rings, such as the first ring 148, can comprise a wind facing edge 190 and a wind trailing edge 192. The wind facing edge 190 can comprise a radial surface 194. As shown in FIGS. 10A and 12, each fin 162 can comprise a convex surface 196. As shown in FIG. 10, each of the first set 164 of fins 162 can be equally spaced, each of the second set 150 of fins 162 can be equally spaced, and so on, for each successive set of fins 152.

As shown in FIGS. 10A and 12, each of the fins 162 can comprise leading edge 198. The leading edge 198 can define an axis 200. The axis 200 of the fins 162 can be on approximately the same plane defined by wind facing edge 190 of the rings (more specifically, in this embodiment, the plane tangent to the apex of the radial surface 194 of the wind facing edge 190), such as the first ring 148, the second ring 150, and so on. The wind trailing edge 192 of the first ring 148 can define a trailing plane. In the embodiment depicted at FIG. 11, the wind trailing edges 192 of the second ring 150 and the third ring 152 define the same plane as the trailing plane of the first ring 148. By changing the position of each fin 162 of the first set 164 of fins 162 and the second set 166 of fins 162 relative to the axis 200, the convex surface 196 of each of those fins 162 can approximately touch the plane defined by the trailing plane of the first ring 148, the second ring 150, and the third ring 152. Likewise, because the width 178 of the fourth ring 154 and the fifth ring 156 is smaller than the width 176 of the first ring 148, the second ring 150, and the third ring 152, the wind trailing edges 192 of the fourth ring 154 and the fifth ring 156 lie in the same plane relative to each other but in a different plane relative to the plane defined by the wind trailing edges 192 of the first ring 148, the second ring 150, and the third ring 152. The position of each fin 162 of the third set 168 and fourth set 170 of fins 162 can be changed relative to the axis 200 so that the convex surface 196 of each of those fins 162 can approximately touch the plane defined by the wind trailing edges 192 of the fourth ring 154 and the fifth ring 156. Likewise, because the width 180 of the sixth ring 158 and the seventh ring 160 is smaller than the width 178 of the fourth ring 154 and the fifth ring 156, the wind trailing edges 192 of the sixth ring 158 and seventh ring 160 lie in the same plane relative to each other but in a different plane relative to the plane defined by the wind trailing edges 192 of the fourth ring 154 and the fifth ring 156. The position of each fin 162 of the fifth set 172 and sixth set 174 of fins 162 can be changed relative to the axis 200 so that the convex surface 196 of each of those fins 162 can approximately touch the plane defined by the wind trailing edges 192 of the sixth ring 158 and the seventh ring 160. In general, as the width of the rings

15

get smaller in the outward from center direction, the position of each fin **162** of each of the sets of fins can be changed relative to the axis **200** so that the convex surface **196** of each of those fins **162** can approximately touch the plane defined by the trailing plane of the outermost ring to which the second end **188** of the fin **162** is attached.

The wind turbine **14** can further comprise an axis of turbine rotation **202**. All rings, such as the first ring **148**, the second ring **150**, the third ring **152**, and so on, can be concentric around the axis of turbine rotation **202**. The axis **200** of each fin **162** is directed towards and approximately intersects the axis of turbine rotation **202**.

A user can use any embodiments of the above mobile electricity generators **10** to provide electricity to a device that requires electricity. First the user presents an embodiment of the mobile electricity generator **10** described above to a location near where the generation of electricity is desired.

Second, the user allows one or more of the following events to occur—(i) allowing the wind turbine **14** to transform wind into electricity; (ii) allowing a solar panel (or more than one solar panels), such as first solar panel **78**, second solar panel **146**, first solar panel array **98**, or second solar panel array **100**, to transform light into electricity; and (iii) allowing the fuel-based generator **114** to transform fuel (such as diesel, gasoline, natural gas, ethanol, or any other fuel) into electricity. Typically, the solar panel will constantly transform light into electricity, if enough light energy is available from the sun, without user involvement—the user need simply allow the solar panel to do so. In order to allow the wind turbine **14** to transform wind into electricity, the user must cause the telescopic boom **12** to rise to the active position **60**. If needed, the user can move the support legs, such as first retractable support leg **16**, second retractable support leg **30**, and third retractable support leg **32** to an extended position **26**, or the levelers **68**, to level and support the generator **10** before allowing the wind turbine **14** to transform wind into electricity. In order for the fuel-based generator **114** to transform diesel fuel into electricity, the user must place fuel into the engine portion of the fuel-based generator and activate the engine.

Third, the user presents a device that requires electricity to operate and, fourth, electrically connects the device that requires electricity to operate to the generator **10**. If the generator **10** incorporates direct current cable **346** or alternating current cable **354**, the user can connect the device to which ever cable supplies the type of electricity that the device requires. The generator **10** can be located anywhere, but may be best located where electricity is not already supplied, like a maritime vessel (especially when docked), a construction site, and a military base (especially a forward military base). The aforementioned steps need not occur consecutively.

In the foregoing description, it will be readily appreciated by those skilled in the art that modifications may be made to the invention without departing from the concepts as disclosed herein. Such modifications are to be considered as included in the following claims, unless those claims by their language expressly state otherwise.

What is claimed is:

1. A mobile electricity generator comprising:

- a telescopic boom comprising a first end and a second end;
- a wind turbine attached to the second end of the telescopic boom, wherein the wind turbine is capable of transforming wind into electricity;
- a first solar panel capable of transforming light into electricity;
- a fuel-based generator capable of transforming fuel into electricity;
- a first retractable support leg, a second retractable support leg, and a third retractable support leg;

16

a base comprising an external surface;

a battery in electric communication with the wind turbine, the first solar panel, and the fuel-based generator wherein the battery is capable of at least temporarily storing the electricity; and

an inverter in electronic communication with the battery, and

wherein the telescopic boom is capable of a resting position and an active position;

wherein the first solar panel is attached to the base such that the external surface of the base does not impede the first solar panel's access to sun light;

wherein the first end of the telescopic boom is attached to the base and the first retractable support leg is attached to the base;

wherein the first retractable support leg is capable of both a retracted position and an extended position;

wherein the second retractable support leg is capable of both a retracted position and an extended position;

wherein the third retractable support leg is capable of both a retracted position and an extended position;

wherein the base comprises a first housing that at least partially houses the first retractable support leg when the first retractable support leg is in the retracted position;

wherein the base comprises a second housing that at least partially houses the second retractable support leg when the second retractable support leg is in the retracted position;

wherein the base comprises a third housing that at least partially houses the third retractable support leg when the third retractable support leg is in the retracted position;

wherein the inverter is capable of converting electricity into alternating current; and

wherein the telescopic boom does not cover the first solar panel when the telescopic boom is in the resting position.

2. The mobile electricity generator of claim 1,

wherein the base further comprises a bottom surface;

wherein the bottom surface at least partially touches a ground surface when the first retractable support leg, the second retractable support leg, and the third retractable support leg are in their respective retracted positions; and

wherein the bottom surface does not touch the ground surface when the first retractable support leg, the second retractable support leg, and the third retractable support leg are in their respective extended positions.

3. The mobile electricity generator of claim 1,

further comprising an extension hydraulic cylinder, the extension hydraulic cylinder comprising a cylinder base and a piston end; and an active hydraulic cylinder, the active hydraulic cylinder comprising a cylinder base and a piston end;

wherein the piston end of the extension hydraulic cylinder is hinged to the second end of the telescopic boom;

wherein the cylinder base of the extension hydraulic cylinder is attached to the first end of the telescopic boom;

wherein the extension hydraulic cylinder is capable of causing the second end of the telescopic boom to telescopically move away from the first end of the telescopic boom;

wherein the piston end of the active hydraulic cylinder is hinged to the first end of the telescopic boom;

wherein the cylinder base of the active hydraulic cylinder is hinged to the base;

17

wherein the first end of the telescopic boom is hinged to the base; and
 wherein active hydraulic cylinder is capable of causing the telescopic boom to move between the resting position and the active position.

4. The mobile electricity generator of claim 3, further comprising a boom support, the boom support comprising a lateral support, a first end, and a second end; wherein the boom support is attached to the base; wherein the lateral support separates the first end from the second end;
 wherein the cylinder base of the active hydraulic cylinder is hinged to the first end of the boom support; and
 wherein the first end of the telescopic boom is hinged to the second end of the boom support.

5. The mobile electricity generator of claim 3, wherein the base comprises a turbine cave, a boom cave, and a top surface;
 wherein the first end of the telescopic boom is hinged to the base within the boom cave;
 wherein the cylinder base of the active hydraulic cylinder is hinged to the base within the boom cave; and
 wherein when the telescopic boom is in the resting position, the boom cave at least partially surrounds the telescopic boom and the turbine cave at least partially surrounds the wind turbine, such that the top surface of the base is more highly elevated relative to the ground surface than the telescopic boom and the wind turbine.

6. The mobile electricity generator of claim 1 further comprising a solar panel swing, the solar panel swing comprising: a first end, a first side bracket, and a second side bracket; wherein the first solar panel comprises a first side and a second side;
 wherein the first side of the first solar panel is pivotally attached to the first side bracket and the second side of the first solar panel is pivotally attached to the second side bracket; and
 wherein the first end of the solar panel swing is hinged to the base.

7. The mobile electricity generator of claim 1 further comprising:

a first solar panel array, wherein the first solar panel array is capable of transforming light into electricity;
 a second solar panel array, wherein the second solar panel array is capable of transforming light into electricity;
 a first array support and a second array support, each comprising a first portion and a second portion;
 wherein the second portion is attached to the first portion at an array axis;
 wherein the second portion can rotate relative to the first portion about the array axis;
 wherein at least part of the first solar panel array is attached to the first portion of the first array support and at least part of the first solar panel array is attached to the second portion of the first array support;
 wherein at least part of the second solar panel array is attached to the first portion of the second array support and at least part of the second solar panel array is attached to the second portion of the second array support;
 wherein the first solar panel array and second solar panel array are in electric communication with the battery;
 wherein a boom alley separates the first solar panel array and the second solar panel array; and
 wherein the telescopic boom is capable of being within boom alley when the telescopic boom is in the resting position.

18

8. The mobile electricity generator of claim 1 further comprising a light source attached to the telescopic boom.

9. The mobile electricity generator of claim 1 further comprising a length of direct current cable capable of conducting direct current, a length of alternating current cable capable of conducting alternating current, a first reel, and a second reel, the base further comprising an inner chamber, an access door to the inner chamber, a first aperture through which at least part of the length of direct current cable can extend from the inner chamber of the base to an area external to the base, and a second aperture through which at least part of the length of alternating current cable can extend from the inner chamber of the base to an area external to the base,
 wherein the inner chamber at least partially houses the battery, the inverter, the fuel-based generator, the length of direct current cable, the length of alternating current cable, the first reel, and the second reel,
 wherein the length of direct current cable is in electric communication with the battery,
 wherein the length of alternating current cable is in electric communication with the inverter,
 wherein the first reel accepts at least a portion of the length of direct current cable, and
 wherein the second reel accepts at least a portion of the length of alternating current cable.

10. The mobile electricity generator of claim 1 the base further comprising a top surface,
 wherein, at the resting position, the telescopic boom is approximately parallel to top surface of the base and the turbine at least partially lies against the top surface of the base, and
 wherein, at the active position, the length of the telescopic boom is approximately perpendicular to the top surface of the base and the turbine is able to rotate.

11. The mobile electricity generator of claim 10, the base further comprising at least one leveler in communication with a ground surface, wherein the at least one leveler is capable of moving the plane defined by the top surface of the base.

12. A mobile electricity generator of claim 1 further comprising a first battery housing,

wherein the base further comprises a trailer comprising:
 at least two wheels;
 a hitch; and
 a first housing, a second housing, and a third housing;
 wherein the trailer supports the first battery housing, and
 wherein the first battery housing at least partially houses the battery;
 wherein the first retractable support leg, the second retractable support leg, and the third retractable support leg all comprise a first part and a second part, the first part comprising a support foot, and the first part is capable of telescoping into the second part;
 wherein the second part of the first retractable leg is capable of telescoping into the first housing;
 wherein the second part of the second retractable leg is capable of telescoping into the second housing; and
 wherein the second part of the third retractable leg is capable of telescoping into the third housing.

13. The mobile electricity generator of claim 12 further comprising a second battery and a second battery housing, wherein the trailer supports the second battery housing, wherein the second battery housing at least partially houses the second battery,
 wherein a boom alley separates the first battery housing and the second battery housing, and

19

wherein the telescopic boom is capable of being within boom alley when the telescopic boom is in the resting position.

14. The mobile electricity generator of claim 13 further comprising a second solar panel and a light source attached to the telescopic boom,

wherein the first solar panel is mounted upon the first battery housing and the second solar panel is mounted upon the second battery housing, and

wherein neither the telescopic boom nor the wind turbine cover either of the first solar panel or the second solar panel, when the telescopic boom is in the resting position.

15. The mobile electricity generator of claim 1, the wind turbine comprising an axis of turbine rotation, and a series of rings with sets of fins separating the rings, each fin comprising a convex surface,

wherein the series of rings comprise a first ring, a second ring, a third ring, a fourth ring, a fifth ring, a sixth ring, and a seventh ring, each of the rings comprising a width, an inner diameter, an outer diameter, a wind facing edge, and a wind trailing edge,

wherein the wind facing edge comprises a radial surface, wherein the width of the first ring is larger than the width of the fourth ring and width of the fourth ring is larger than the width of the seventh ring,

wherein the width of the first ring, the second ring, and the third ring is the same but is larger than the width of the fourth ring and the fifth ring, which in turn is larger than the width of the sixth ring and the seventh ring,

wherein the sets of fins comprise a first set of fins separating the first ring from the second ring, a second set of fins separating the second ring from the third ring, a third set of fins separating the third ring from the fourth ring, a fourth set of fins separating the fourth ring from the fifth ring, a fifth set of fins separating the fifth ring from the sixth ring, and a sixth set of fins separating the sixth ring from the seventh ring,

wherein each fin of each set of fins is approximately equally spaced apart,

wherein the inner diameter of the second ring is larger than the outer diameter of the first ring, the inner diameter of the third ring is larger than the outer diameter of the second ring, the inner diameter of the fourth ring is larger than the outer diameter of the third ring, the inner diameter of the fifth ring is larger than the outer diameter of the fourth ring, the inner diameter of the sixth ring is larger than the outer diameter of the fifth ring, the inner diameter of the seventh ring is larger than the outer diameter of the sixth ring,

wherein the wind facing edge of each ring defines a plane, wherein the plane defined by the wind facing edge of each ring is approximately the same,

wherein each fin comprises a leading edge, wherein the leading edge defines an axis,

wherein the axis of each fin is on approximately the same plane defined by the wind facing edge of each ring,

wherein the wind trailing edge of the first ring defines a trailing plane, wherein the wind trailing edges of the second ring and the third ring define the same plane as the trailing plane of the first ring,

wherein the convex surface of each of the fins of the first set of fins and the second set of fins approximately touches the plane defined by the trailing plane of the first ring, the second ring, and the third ring,

wherein the wind trailing edges of the fourth ring and the fifth ring lie in the same plane relative to each other but

20

in a different plane relative to the plane defined by the wind trailing edges of the first ring, the second ring, and the third ring,

wherein the convex surface of each fin of the third set and fourth set of fins approximately touches the plane defined by the wind trailing edges of the fourth ring and the fifth ring,

wherein the wind trailing edges of the sixth ring and seventh ring lie in the same plane relative to each other but in a different plane relative to the plane defined by the wind trailing edges of the fourth ring and the fifth ring,

wherein the convex surface of each fin of the fifth set and sixth set of fins approximately touches the plane defined by the wind trailing edges of the sixth ring and the seventh ring,

wherein every ring is concentric around the axis of turbine rotation, and

wherein the axis of each fin is directed towards and approximately intersects the axis of turbine rotation.

16. A method of powering an electrical device comprising the steps of:

a. presenting a mobile electricity generator on a ground surface located at a military base, the mobile electricity generator comprising:

a telescopic boom comprising a first end and a second end;

a wind turbine attached to the second end of the telescopic boom, wherein the wind turbine is capable of transforming wind into electricity;

a first solar panel capable of transforming light into electricity,

a fuel-based generator capable of transforming fuel into electricity;

a first retractable support leg, a second retractable support leg, and a third retractable support leg;

a base comprising an external surface;

a battery in electric communication with the wind turbine, the first solar panel, and the fuel-based generator wherein the battery is capable of at least temporarily storing the electricity; and

an inverter in electronic communication with the battery, and

wherein the telescopic boom is capable of a resting position and an active position;

wherein the first solar panel is attached to the base such that the external surface of the base does not impede the first solar panel's access to sun light;

wherein the first end of the telescopic boom is attached to the base and the first retractable support leg is attached to the base;

wherein the first retractable support leg is capable of both a retracted position and an extended position;

wherein the second retractable support leg is capable of both a retracted position and an extended position;

wherein the third retractable support leg is capable of both a retracted position and an extended position;

wherein the base comprises a first housing that at least partially houses the first retractable support leg when the first retractable support leg is in the retracted position;

wherein the base comprises a second housing that at least partially houses the second retractable support leg when the second retractable support leg is in the retracted position;

21

wherein the base comprises a third housing that at least partially houses the third retractable support leg when the third retractable support leg is in the retracted position;
wherein the inverter is capable of converting electricity 5 into alternating current;
wherein the telescopic boom does not cover the first solar panel when the telescopic boom is in the resting position;
b. moving the telescopic boom to the active position and 10 allowing the turbine to transform wind into electricity;

22

c. positioning the first solar panel to at least partially face sunlight and allowing the first solar panel is to transform light into electricity;
d. placing fuel into the fuel-based generator and allowing the fuel-based generator to transform fuel into electricity
e. presenting a device that requires electricity to operate; and
f. electrically connecting the device that requires electricity to operate to the mobile electricity generator.

* * * * *

UNITED STATES PATENT AND TRADEMARK OFFICE
CERTIFICATE OF CORRECTION

PATENT NO. : 8,295,033 B2
APPLICATION NO. : 13/011291
DATED : October 23, 2012
INVENTOR(S) : Van Straten

Page 1 of 3

It is certified that error appears in the above-identified patent and that said Letters Patent is hereby corrected as shown below:

ON THE TITLE PAGE:

Item (57) Abstract, line 7;
“is” should be --are--.

IN THE SPECIFICATIONS:

Column 1, line 24;
“uses sun-light” should be --use sunlight--.

Column 2, line 39;
“sun light” should be --sunlight--.
Column 2, line 41;
“can capable” should be --can be capable--.

Column 3, line 42;
“be electric” should be --be in electric--.

Column 4, line 7;
“comprise series” should be --comprise a series--.

Column 5, line 25;
“depicts” should be --depict--.
Column 5, line 42;
“prospective” should be --perspective--.

Column 6, lines 13, 15 and 18;
“three blade” should be --three-blade--.
Column 6, line 16;
“two blade” should be --two-blade--.

Signed and Sealed this
Twelfth Day of March, 2013



Teresa Stanek Rea
Acting Director of the United States Patent and Trademark Office

CERTIFICATE OF CORRECTION (continued)

Page 2 of 3

U.S. Pat. No. 8,295,033 B2

Column 6, line 32;
“refracted” should be --retracted--.
Column 6, line 65;
“leg, 16” should be --leg 16,--.

Column 7, line 33;
“be relatively” should be --be a relatively--.
Column 7, line 34;
“of larger” should be --of a larger--.

Column 8, line 47;
“can capable” should be --can be capable--.
Column 8, line 55;
“light collecting” should be --light-collecting--.

Column 9, lines 22 and 23;
“panel 100 array” should be --panel array 100--.
Column 9, line 60;
“116” should be --114--.

Column 10, line 41;
“can comprises” should be --can comprise--.

Column 11, line 49;
“Boy (In” should be --Boy. In--.
Column 11, line 59;
“capable accepting” should be --capable of accepting--.

Column 12, lines 11-12;
“via length of direct current cable 346 and/or length” should be --via a length of direct current cable 346 and/or a length--.
Column 12, line 41;
“foots” should be --foot--.
Column 12, line 48;
“be electric” should be --be in electric--.

Column 13, line 31;
“standalone” should be --stand-alone--.

Column 14, line 29;
“fins 152” should be --fins 162--.

Column 15, lines 43-44;
“which ever” should be --whichever--.

CERTIFICATE OF CORRECTION (continued)

Page 3 of 3

U.S. Pat. No. 8,295,033 B2

IN THE CLAIMS:

Column 16, claim 1, line 12;

“sun light” should be --sunlight--.

Column 17, claim 3, line 3;

“wherein active” should be --wherein the active--.

Column 20, claim 16, line 49;

“sun light” should be --sunlight--.

Column 22, claim 16, line 2;

Delete “is”.

Column 22, claim 16, line 5;

After “electricity” insert --;--.